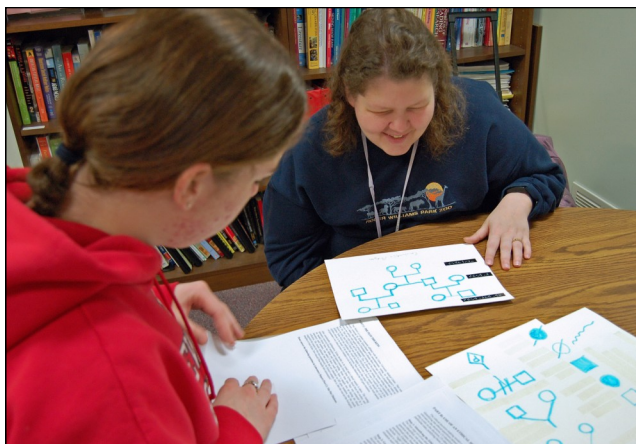
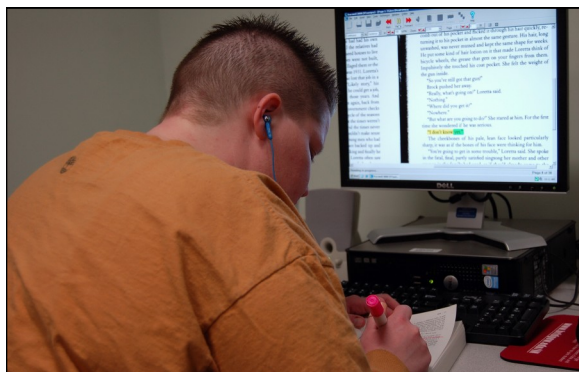


Office of Disability Resources

Bridgewater State University is committed to ensuring all individuals equal access to its programs and services. Bridgewater offers a number of services to students who have a documented medical condition, are physically challenged, or have psychological or learning disabilities. To request support services contact the Office of Disability Resources in the Academic Achievement Center, Maxwell Library, 508.531.2194, TTY 508.531.6113, or FAX 508.531.5713. Appropriate documentation to support the disability must be provided. The staff works with each individual to evaluate their needs, determine resource availability, and assist in coordinating accommodations.

Tips for Accessing Services

1. Following admission, arrange to have current documentation of your disability forwarded to the Office of Disability Resources by a high school counselor, therapist, physician, or other service provider. Documentation must provide a diagnosis and must relate to the specific area, services or program modifications requested and must be completed by a qualified professional with experience working with college-age populations. IEP and 504 plans are not sufficient documentation for accommodation.
2. Following registration, make an appointment with disabilities resources to discuss the disability and plan in advance for the support services anticipated needing at the start of the semester.
3. Individuals with a learning disability should see the Learning Disability Specialist during the first week of classes.
4. For individuals who are clients of governmental units (i.e. Massachusetts Rehabilitation), or private charitable organizations (i.e. March of Dimes), are expected to exercise initiative in identifying and obtaining auxiliary aids and assistance through every reasonable channel.



The Office of Disability Resources offers support in many areas, including:

Deaf and hard of hearing

- Note-taking
- Assistance obtaining interpreters
- Adaptive computing
- TTY access
- Peer tutors
- Short-term loan of assistive hearing device

Learning disabilities

- Extended time on exams (when appropriate)
- Note-taking
- Taping and reader assistance
- Possible alternative testing formats
- Adaptive computing
- Mathematics services, study and research, and Writing Studio
- Peer tutors

Medical conditions

- Accommodations made on an individual basis
- Priority registration if rigid schedule must be kept
- Medical support through Health Services.

Mobility-dexterity challenged

- Program accessibility
- Campus orientation
- Priority registration
- Adaptive computing
- Note-taking and scribes
- Accessible campus transportation

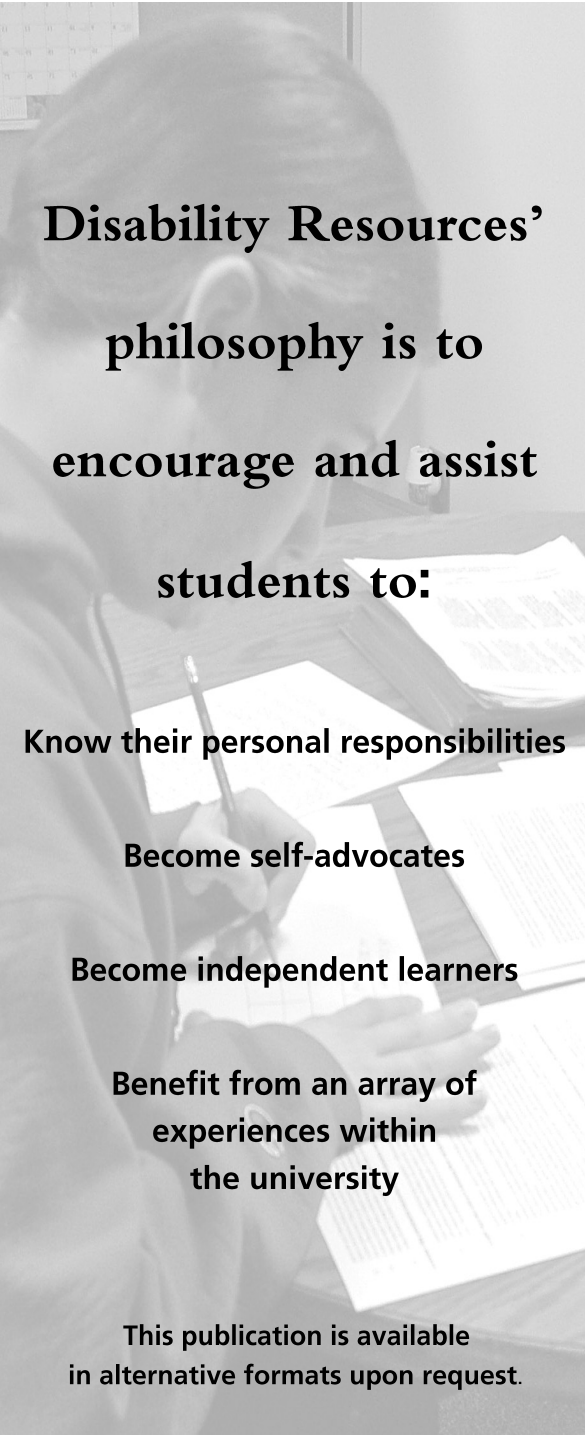
Psychological disabilities

- Accommodations made on an individual basis
- Individualized counseling services through the Counseling Center

Visually challenged

- Taping and reader assistance
- Alternative format materials
- Adaptive computing
- Loan of tape recorder
- Note-taking and scribes
- Peer tutors





**Disability Resources’
philosophy is to
encourage and assist
students to:**

Know their personal responsibilities

Become self-advocates

Become independent learners

**Benefit from an array of
experiences within
the university**

**This publication is available
in alternative formats upon request.**

Support Services

Academic Achievement Center
Peggy Smith, Director
Maxwell Library, Room 001
508.531.1214

Assistant Director for Disability Resources
Patricia S. Connolly
Maxwell Library, Room 001
508.531.2194
TTY 508.531.6113

Learning Disability Specialist
Pamela Spillane
Maxwell Library, Room 001
508.531.2194
TTY 508.531.6113

Counseling Services
Philip Roberts, Director
Counseling Center, Tillinghast Hall, Room 024C
508.531.1331
TTY 508.531.6116

Medical Support Services
Mary Lou Frias, Senior Director
Health Services and Counseling Center
Tillinghast Hall, Room 002
508.531.1252
TTY 508.531.6116

Admission Liaison
Maryellen Harvey
Office of Admission, Gates House
508.531.1237
TTY 508.531.1357

Speech and Hearing Clinic
Professor Joanne Abdallah, Clinic Coordinator
Hart Hall, Room 127
508.531.1720

Assistant to the President
Dr. Alan V. Comedy
Affirmative Action/Equal Opportunity/Disability Compliance
508.531.1241

DISABILITY RESOURCES



BRIDGEWATER

STATE UNIVERSITY

