

The State of Homelessness in the South Shore

Presented by
Matthew D. Simmonds, President
Simtech Solutions Inc.

April 1, 2009

Community Information

CoC Description - Brockton-Plymouth

Point in Time Count - As of January 30th 2008, 645 persons were homeless

Median Income - \$71,113*

General Population Count - 494,000*



CoC Description - Quincy-Weymouth

Point in Time Count - As of January 30th 2008, 256 persons were homeless

Quincy Median Income - \$55,113*

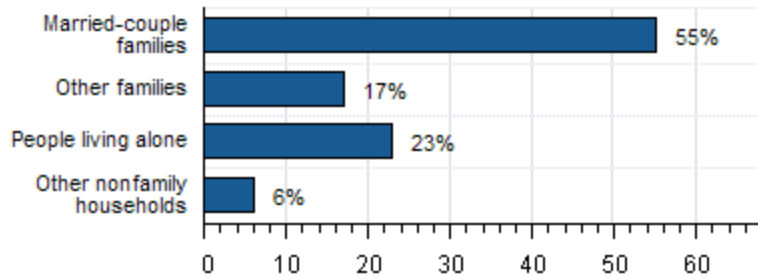
General Population Count - 142,013**



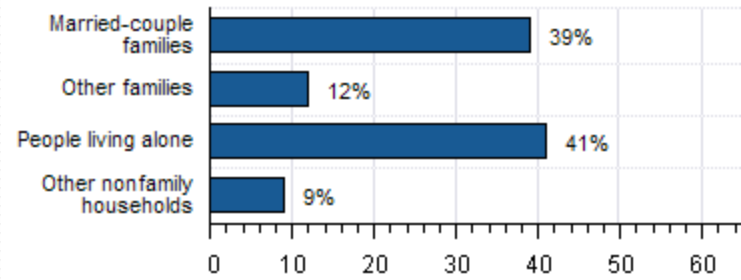
Source: * US Census ACS Survey, 2007 ** US Census 2000

Household Composition

Plymouth County

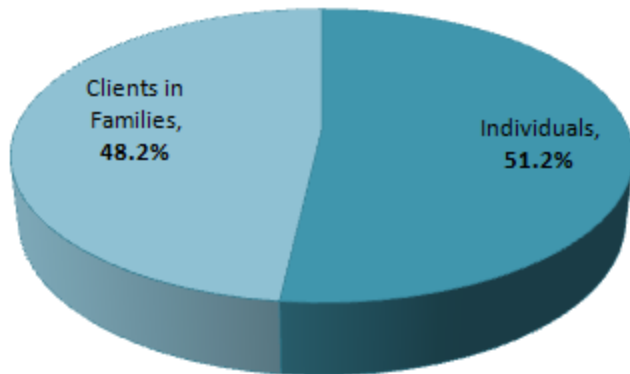


Quincy-Weymouth

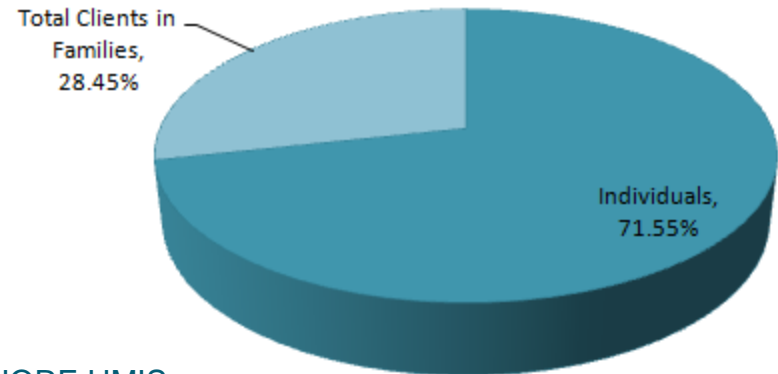


Source: American Community Survey, 2007

Household Composition - Homeless



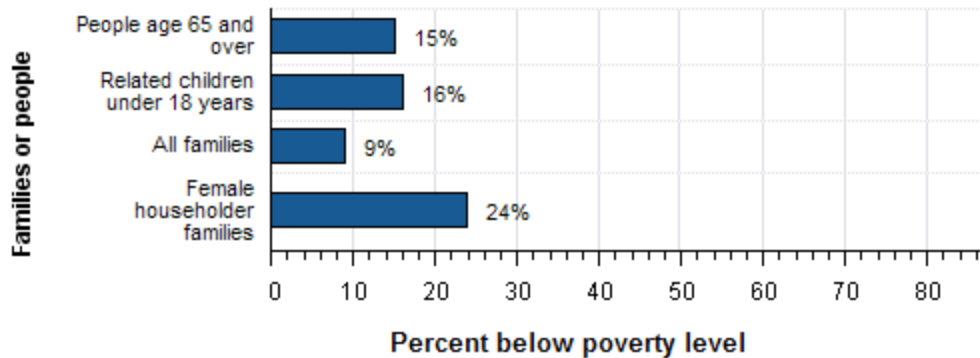
Household Composition - Homeless



Source: SHORE HMIS
Jan 1 2007 - Dec 31, 2007

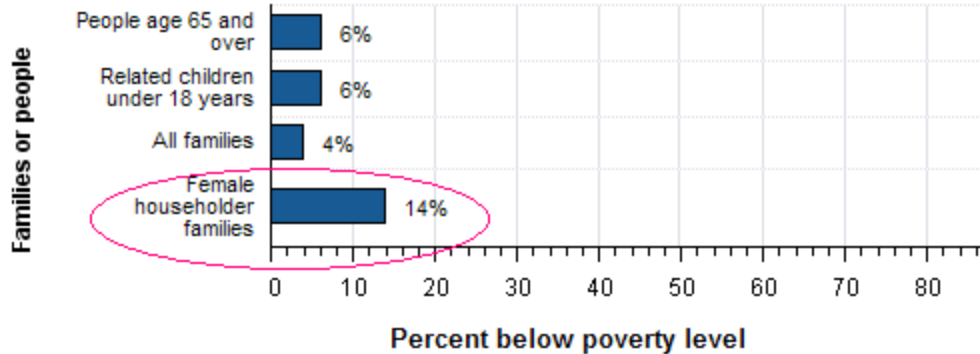
Poverty Comparison

Poverty Rates in Quincy city, Norfolk County, Massachusetts in 2007



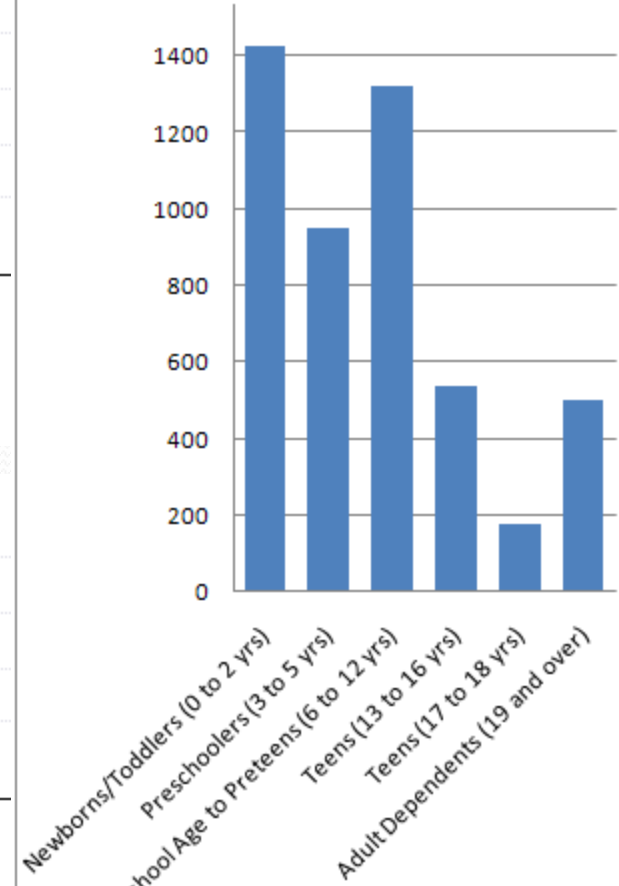
Source: American Community Survey, 2007

Poverty Rates in Plymouth County, Massachusetts in 2007



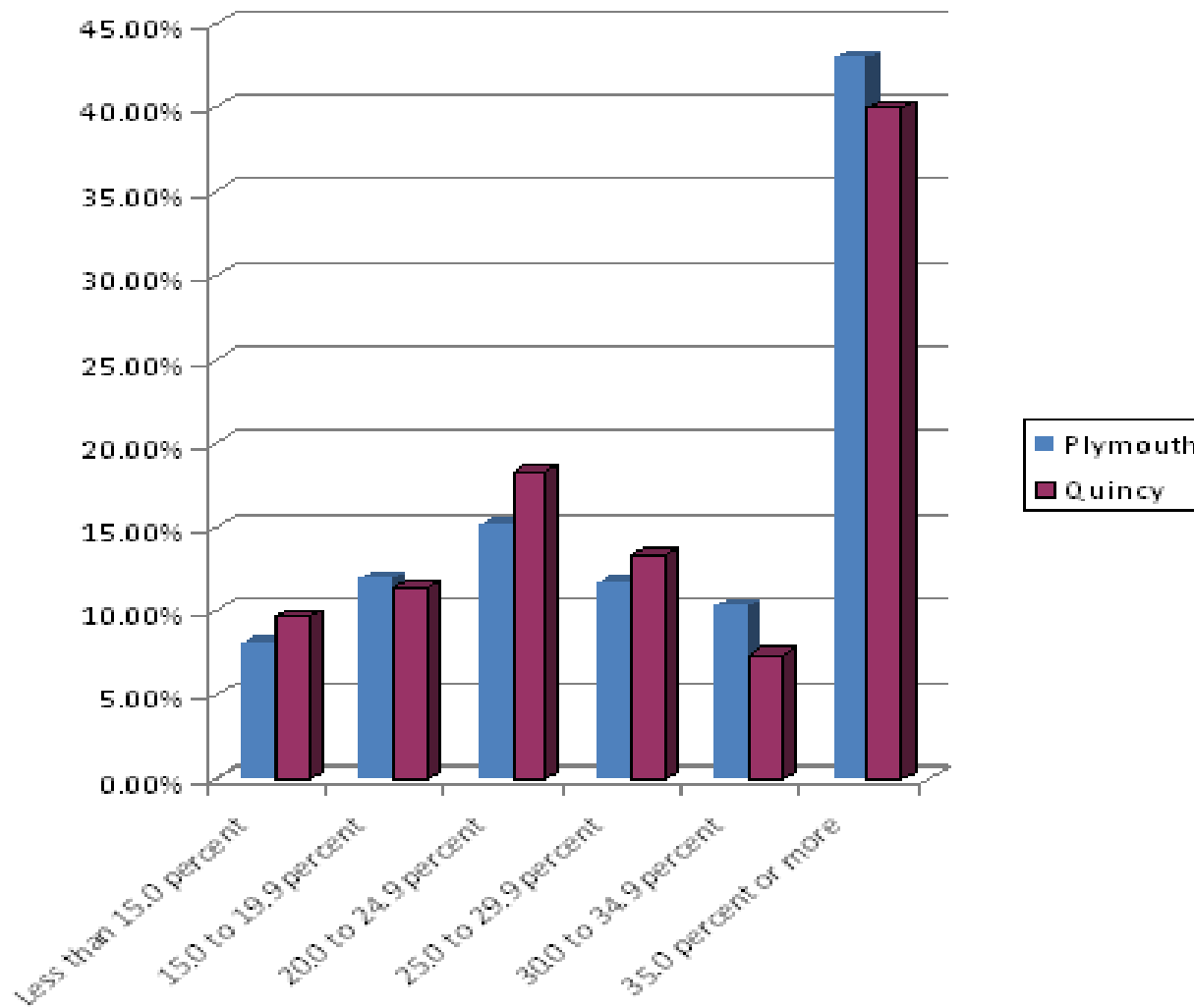
Source: American Community Survey, 2007

Avg. Child Age for EA Families - Sept. 2008



Source: BEACON

Rent as % of Household Income



Housing Stock Comparison

Community - Brockton-Plymouth

Total Housing Units – 191,333

Occupied Units – 172,721

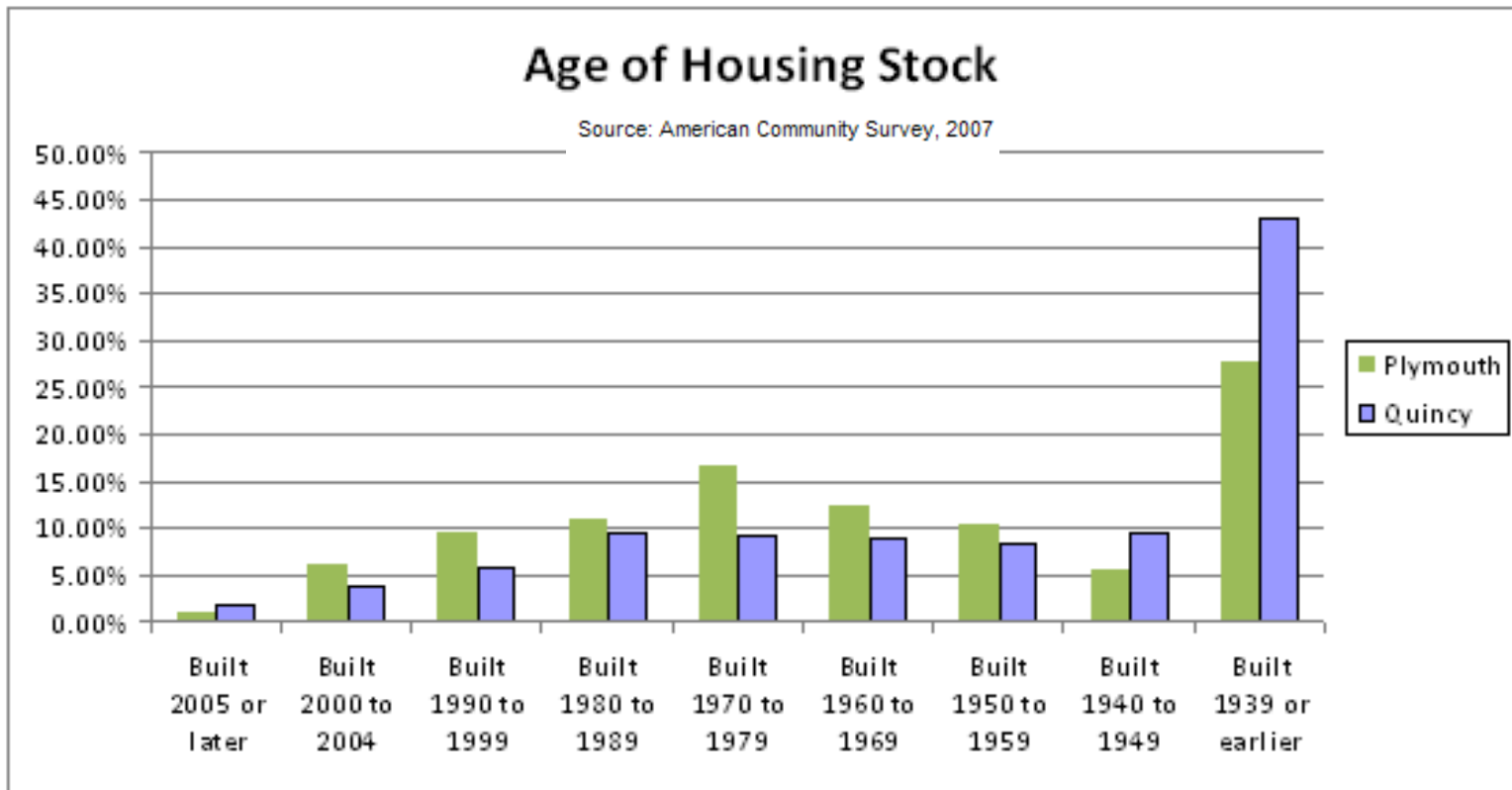
Vacant Units – 19,916 (10.3%)

Community - Quincy

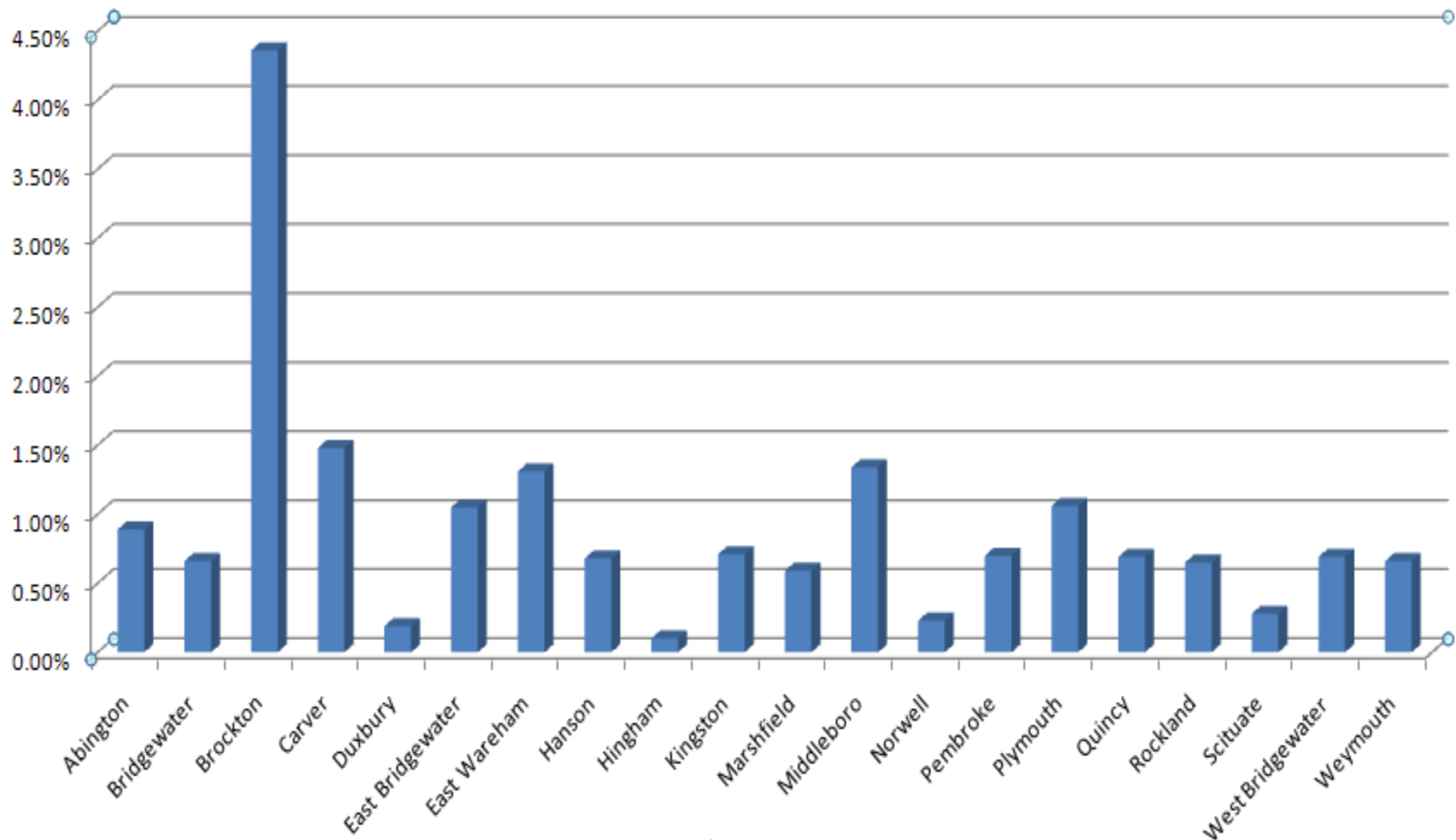
Total Housing Units – 40,637

Occupied Units – 37,537

Vacant Units – 3,100 (7.6%)



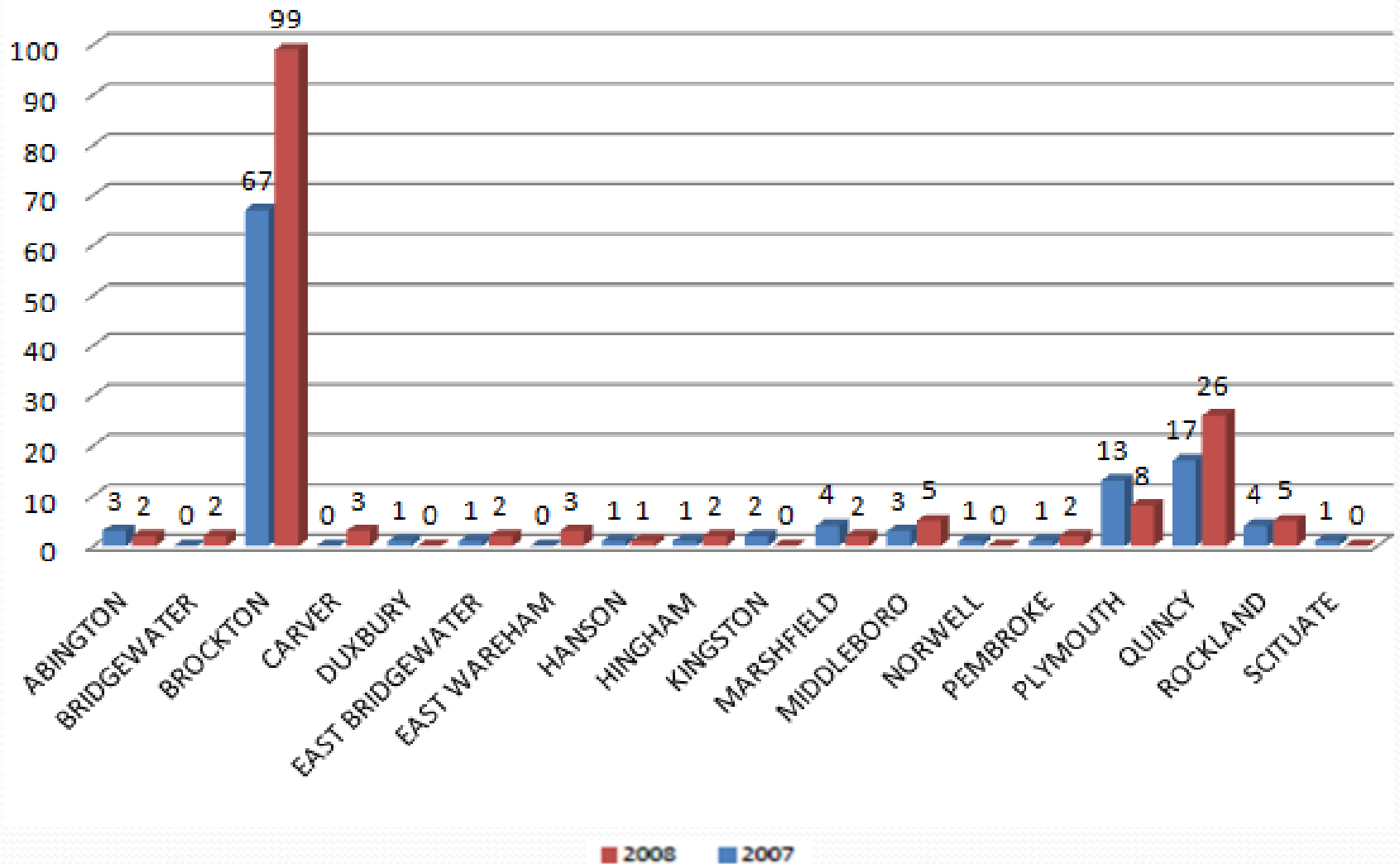
Foreclosure Rates by Town



Foreclosure Rate = $\frac{\# \text{ of Foreclosed Homes}}{\# \text{ of Residential Properties}}$

SOURCE: The Warren Group, 2006—Sep 2008

DTA EA Families by Town of Origin - South Shore



SOURCE: BEACON - Sep 2007 & 2008

Regional Point In Time Count Trend Analysis of Family Homelessness

State: NE

Region:

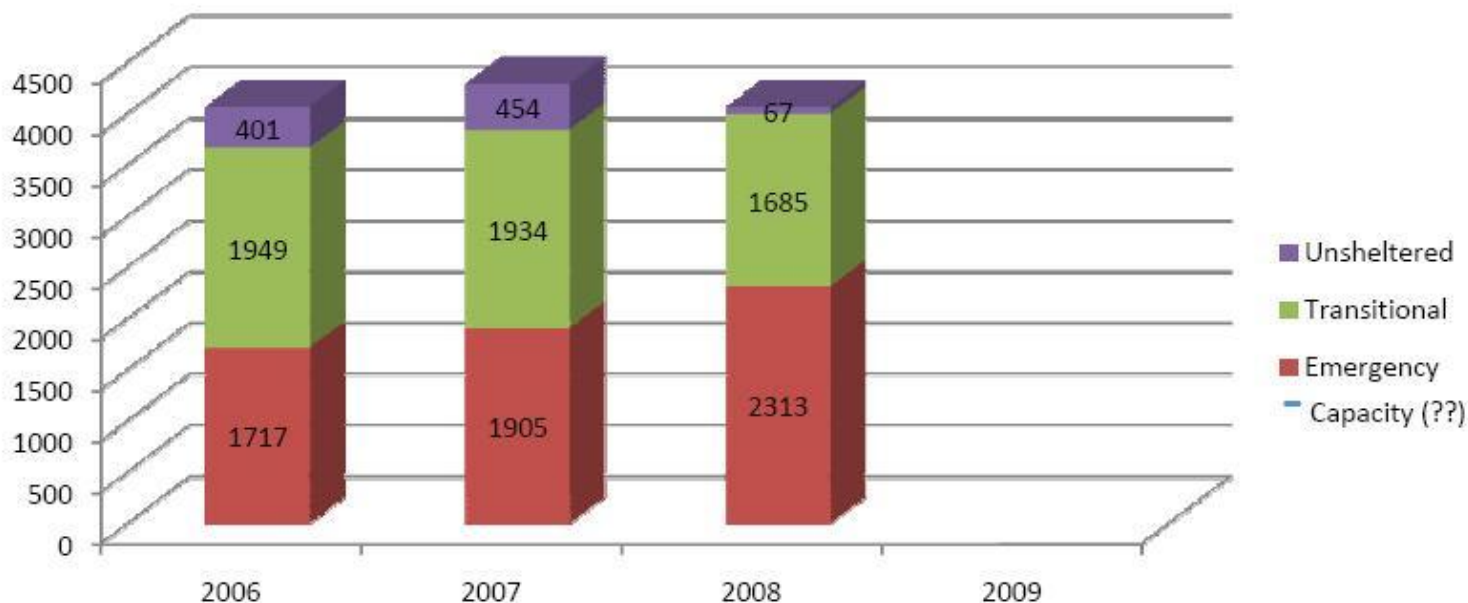
All of New England

CoC Code:

Date Range:

2006 to 2009

Number of Households with Dependent Children (Families)						
Year	Emergency	Transitional	Unsheltered	Total	Pct Change	Change Since 2006
2006	1717	1949	401	4067		
2007	1905	1934	454	4293	5.56%	5.56%
2008	2313	1685	67	4065	-5.31%	-0.05%
2009	#N/A	#N/A	#N/A	#N/A	#N/A	#N/A



Regional Point In Time Count

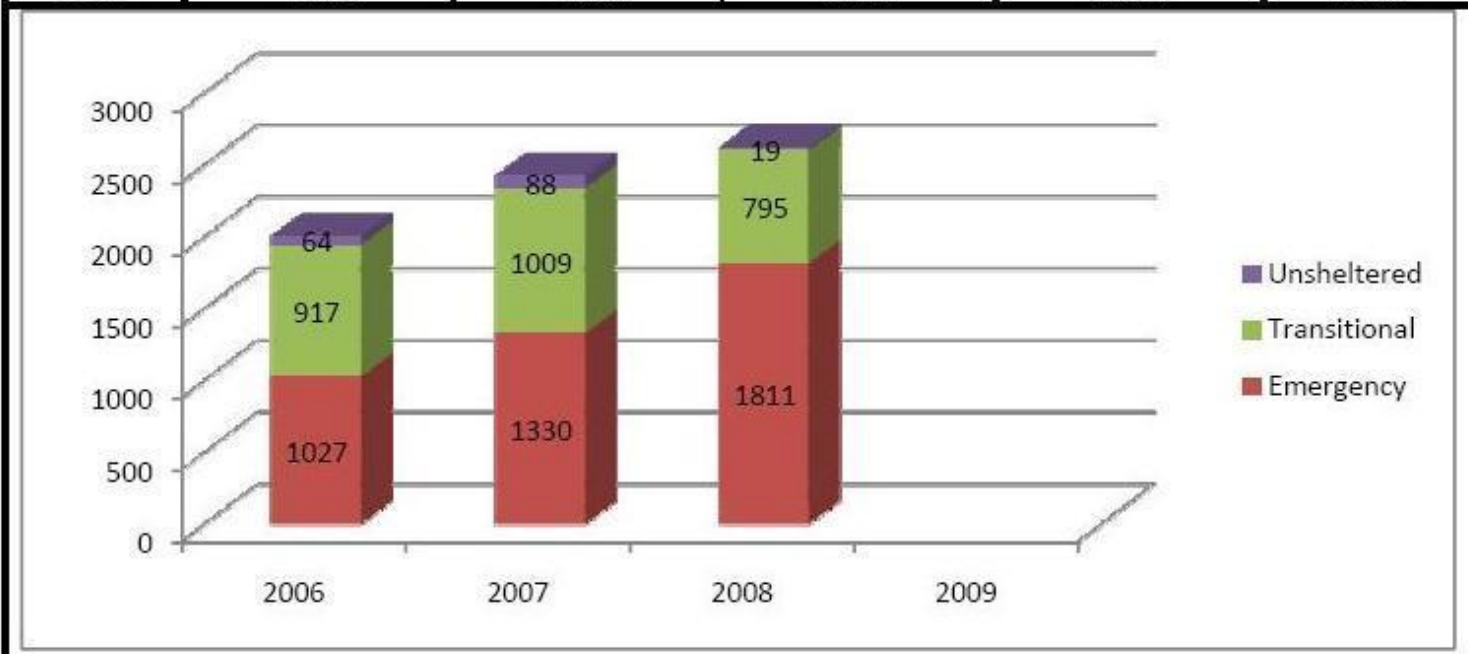
Family Trend Analysis

State: MA

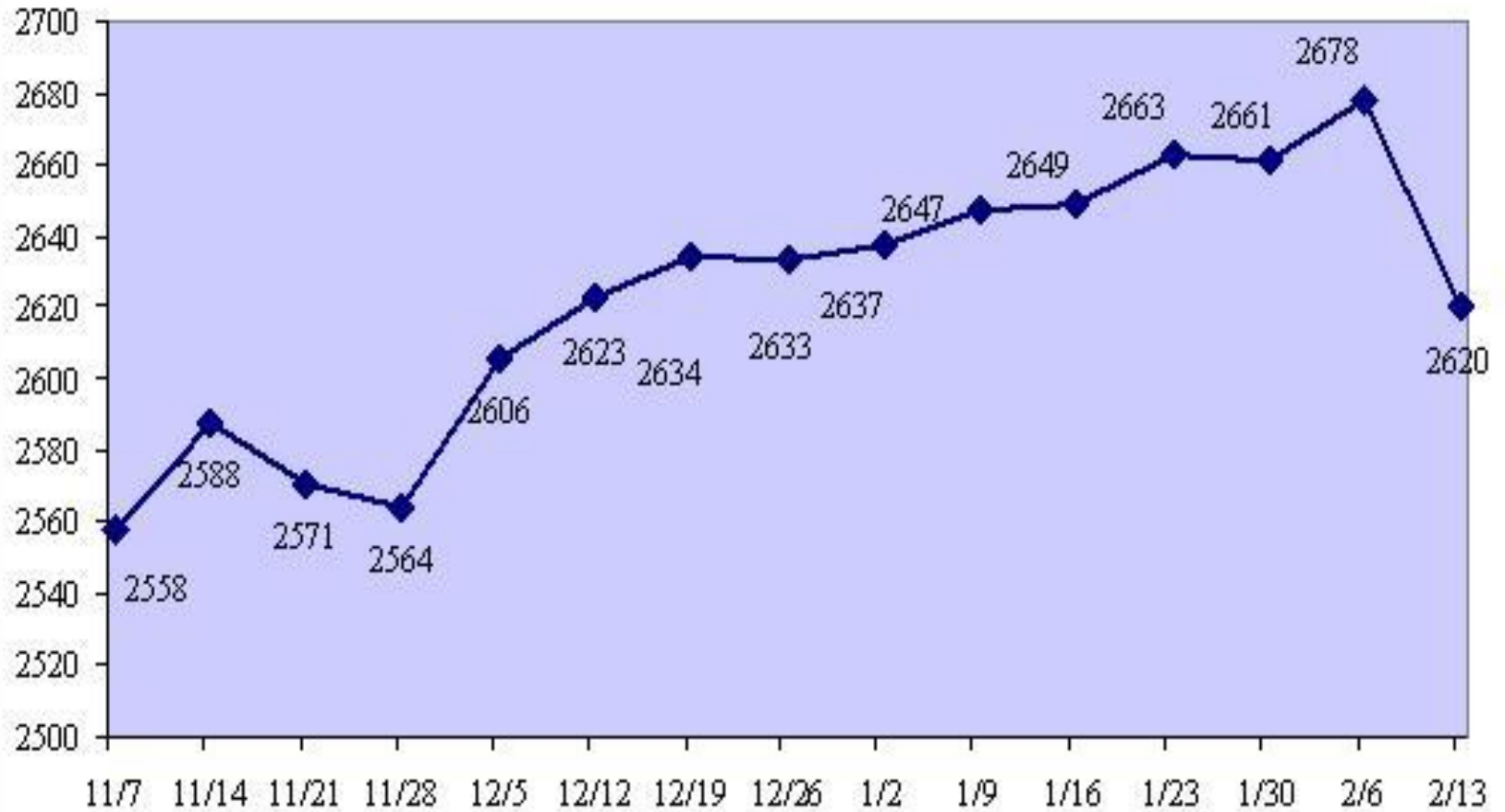
Continuum Code: _____ (blank for all)

Continuum: State of Massachusetts

Number of Households with Dependent Children (Families)					
Year	Emergency	Transitional	Unsheltered	Total	Pct Change
2006	1027	917	64	2008	
2007	1330	1009	88	2427	20.87%
2008	1811	795	19	2625	8.16%
2009	#N/A	#N/A	#N/A	#N/A	#N/A



Total EA Shelter Caseload November 2008 - February 2009



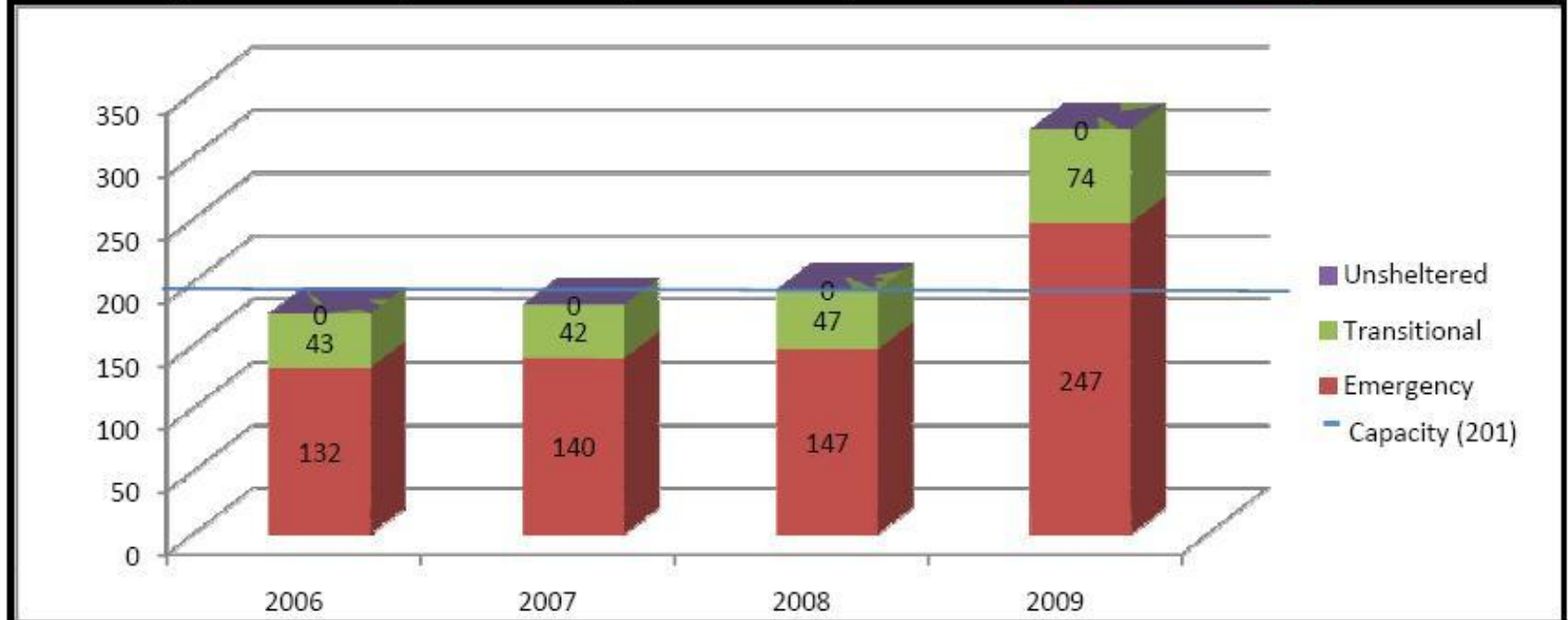
Regional Point In Time Count Trend Analysis of Family Homelessness

State: MA
CoC Code: ICHH-SS

Region:
Date Range:

ICHH - South Shore
2006 to 2009

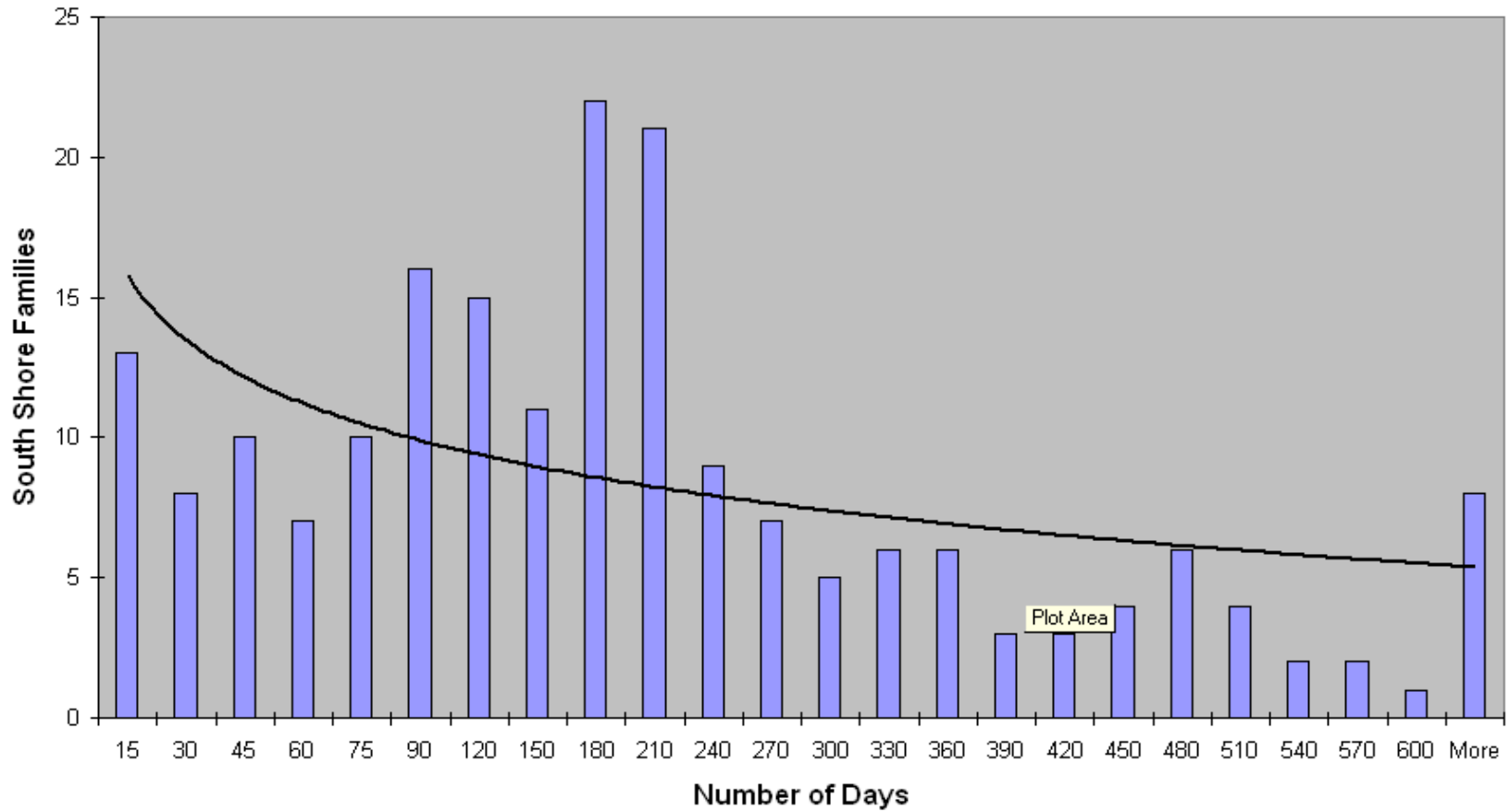
Number of Households with Dependent Children (Families)						
Year	Emergency	Transitional	Unsheltered	Total	Pct Change	Change Since 2006
2006	132	43	0	175		
2007	140	42	0	182	4.00%	4.00%
2008	147	47	0	194	6.59%	10.86%
2009	247	74	0	321	65.46%	83.43%



Source: AgencyDash.com and Microsoft Excel
Brockton/Plymouth & Quincy/Weymouth CoCs
Jan 2006 - Jan 2009

Length of Stays

LOS for South Shore Still in Shelter

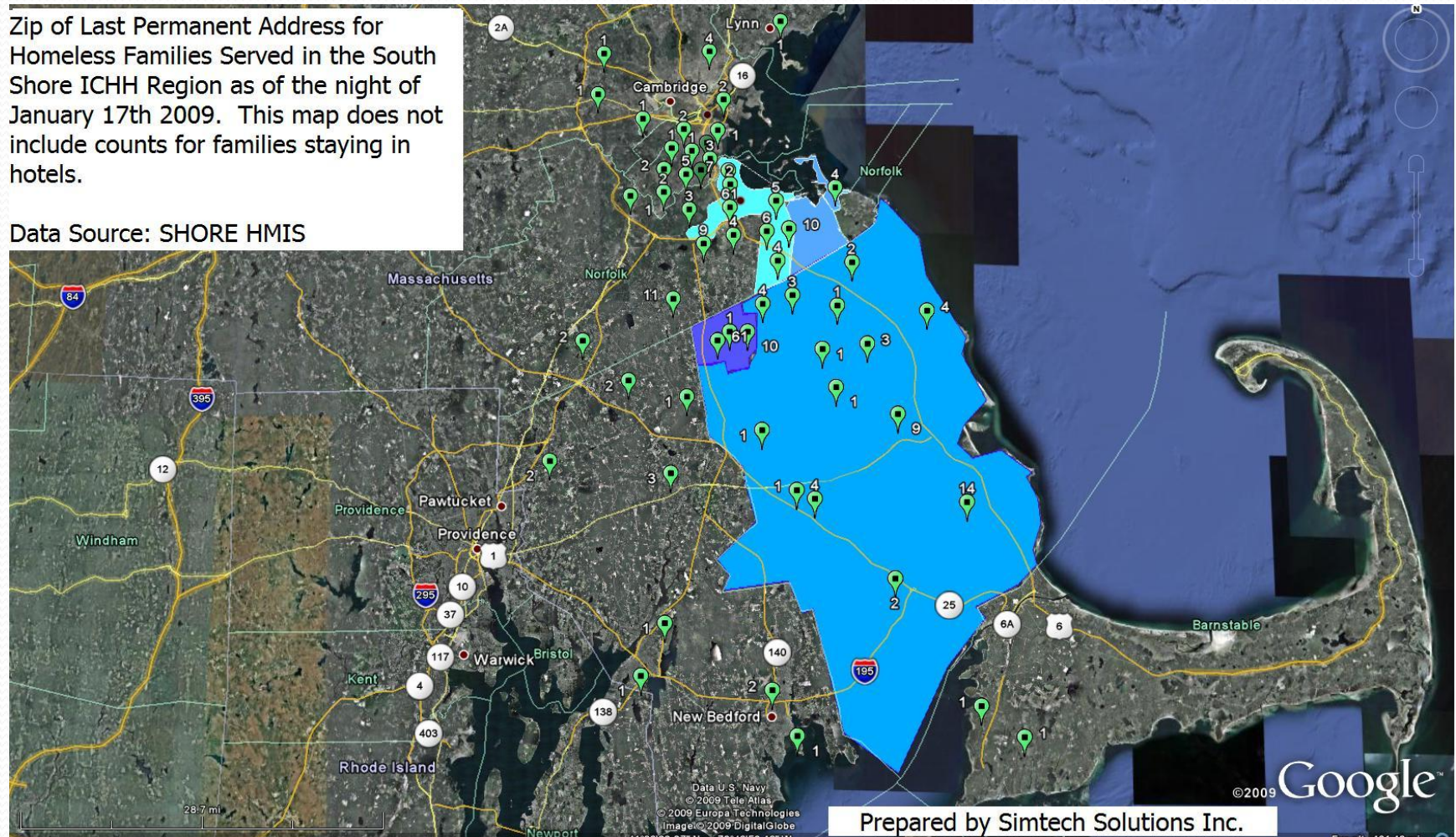


SOURCE: BEACON
February 2009

Last Permanent Address

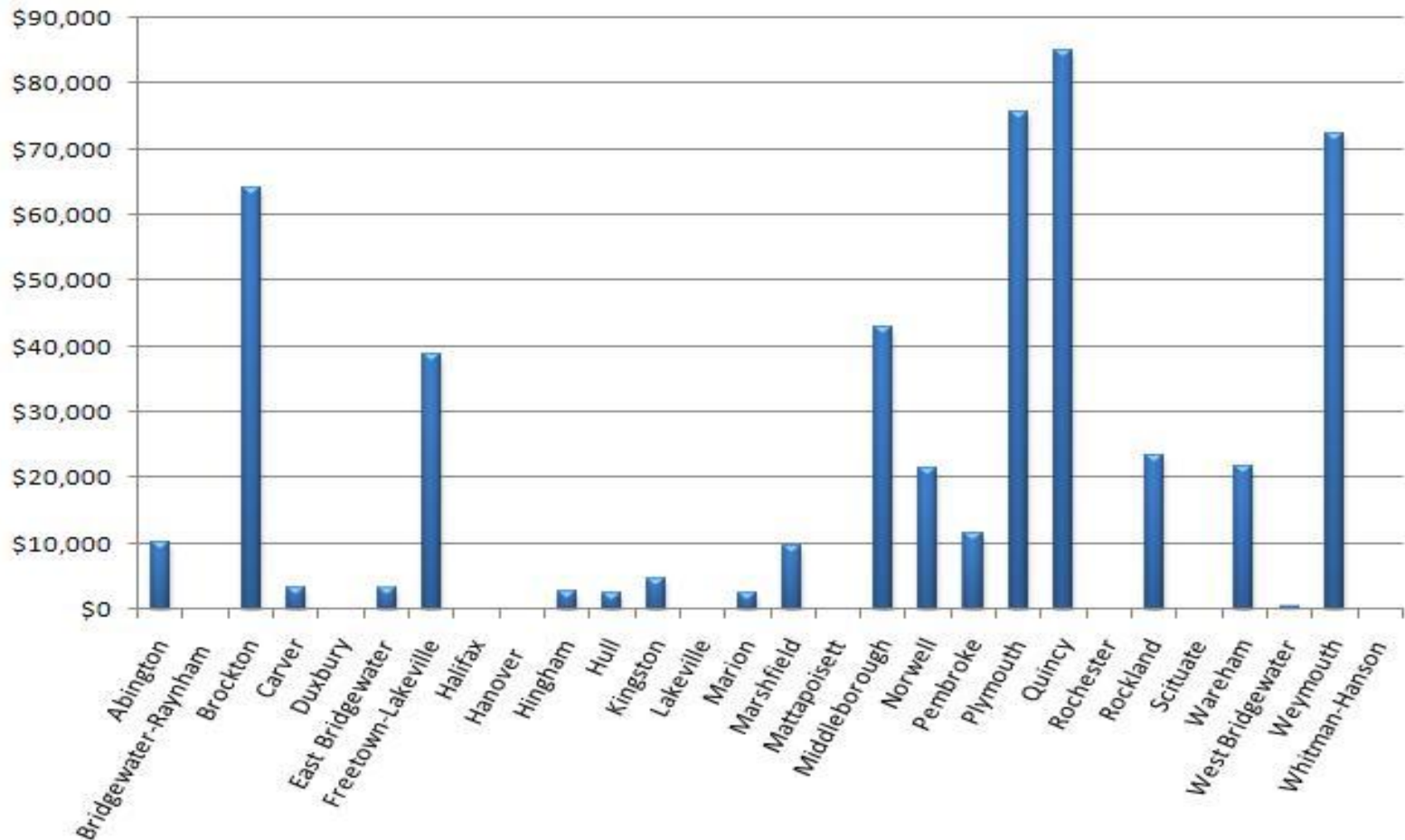
Zip of Last Permanent Address for Homeless Families Served in the South Shore ICHH Region as of the night of January 17th 2009. This map does not include counts for families staying in hotels.

Data Source: SHORE HMIS



Prepared by Simtech Solutions Inc.

Student Transportation Costs



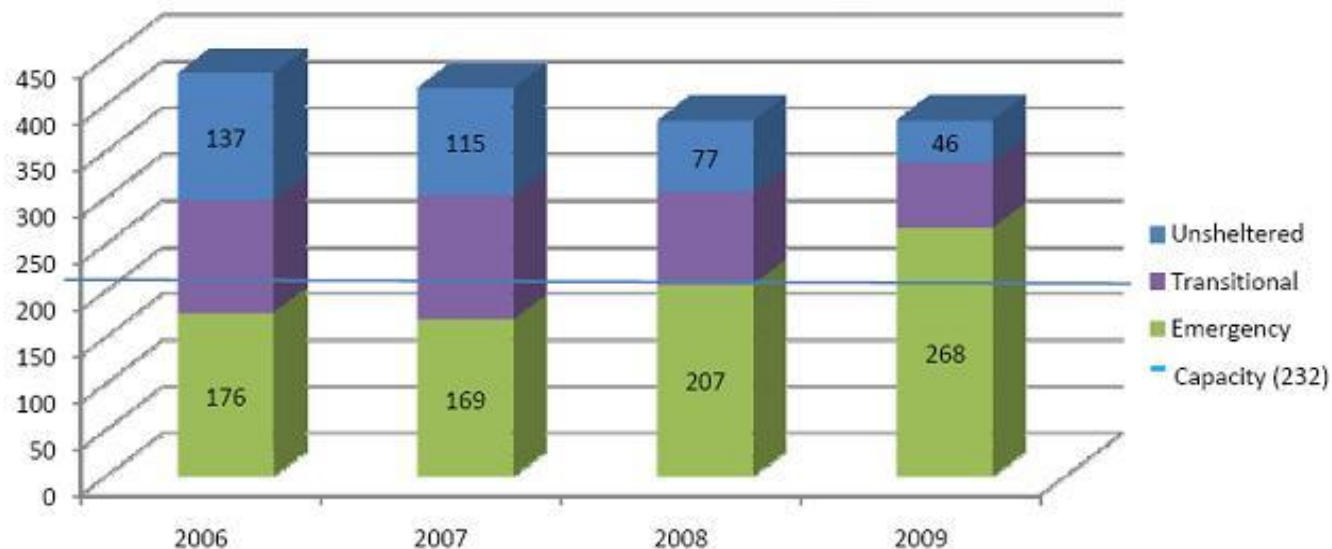
SOURCE: Dept. Of Education
2007-2008 School Year

Regional Point In Time Count Trend Analysis of Individual and Chronic Homelessness

State: MA
CoC Code: ICHH-SS

Region: ICHH - South Shore
Date Range: 2006 to 2009

Number of Households without Dependent Children (Individuals)							
Year	Emergency	Transitional	Unsheltered	Total	Unsheltered Rate	Pct Change	Change Since 2006
2006	176	121	137	434	46.13%		
2007	169	134	115	418	37.95%	-3.69%	-3.69%
2008	207	99	77	383	25.16%	-8.37%	-11.75%
2009	268	70	46	384	13.61%	0.26%	-11.52%



Source: AgencyDash.com and Microsoft Excel
Brockton/Plymouth & Quincy/Weymouth CoCs
Jan 2006 - Jan 2009

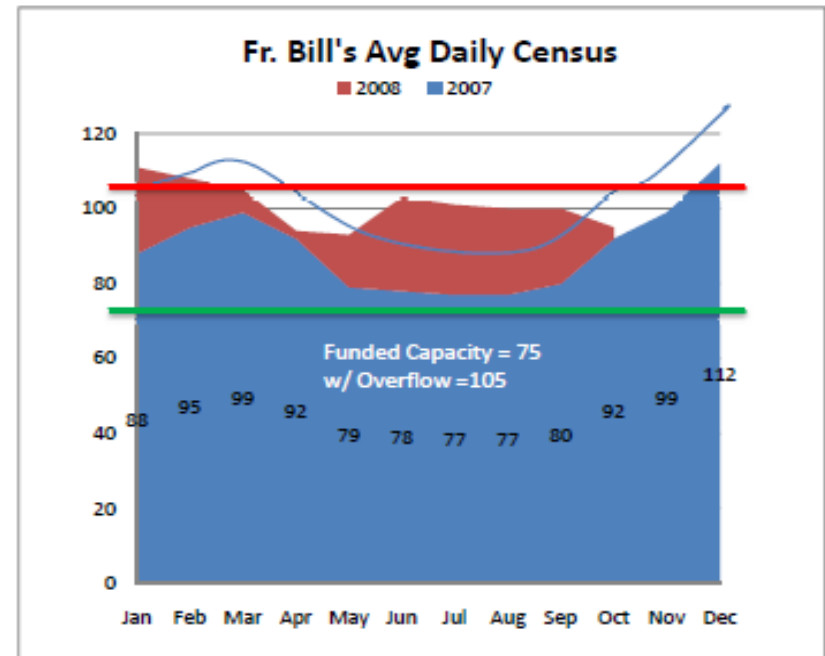
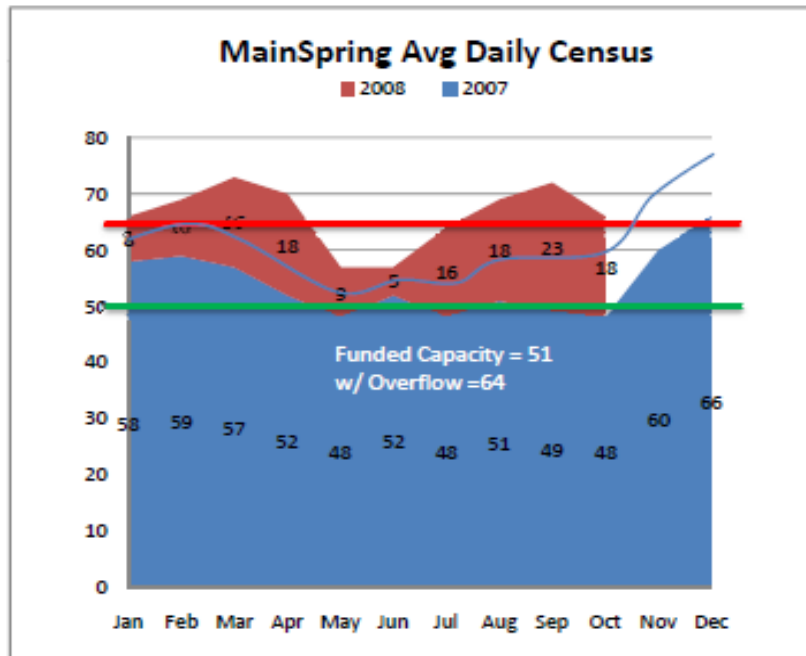
Father Bill's MainSpring Individual Emergency Shelter Occupancy

June to October 2007 vs. June to October 2008

Comparison of Daily Average Guest Counts

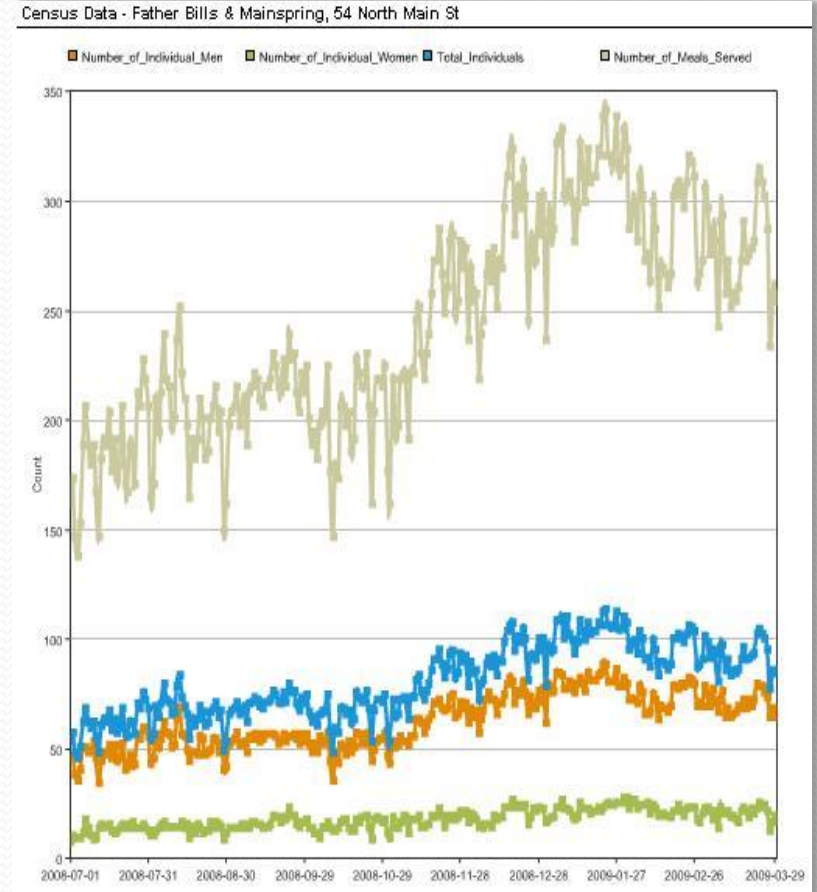
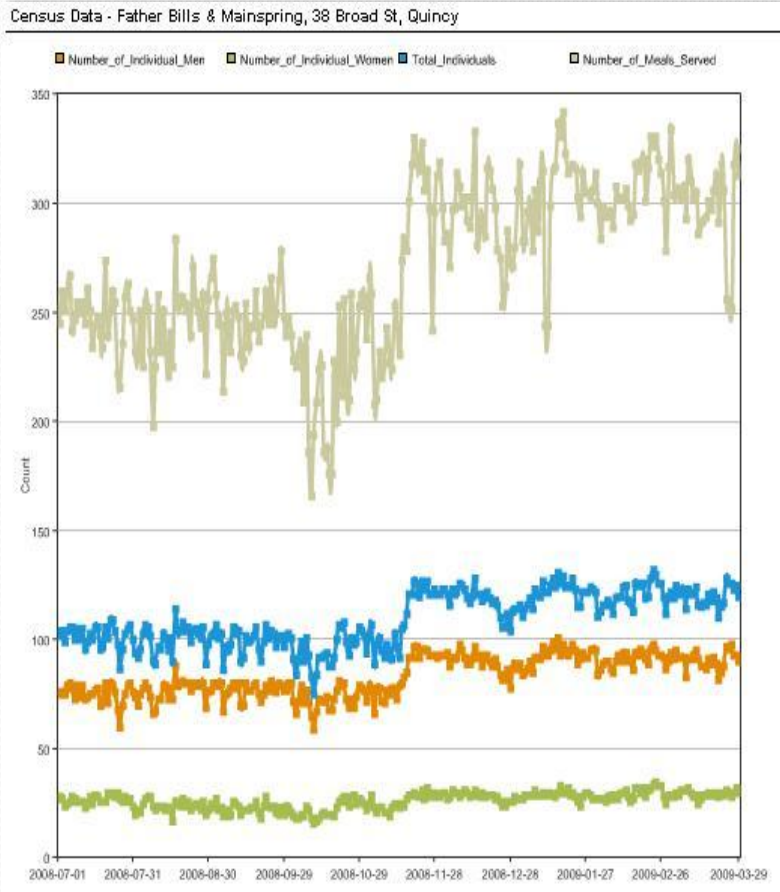
	Year	Jan	Feb	Mar	Apr	May	Jun	Jul	Aug	Sep	Oct	Nov	Dec	Jan-Oct
Mainspring	2007	58	59	57	52	48	52	48	51	49	48	60	66	522
Mainspring	2008	66	69	73	70	57	57	64	69	72	66	76.21	83.83	663
Delta		8	10	16	18	9	5	16	18	23	18			
Average		62	64	65	61	52.5	54.5	56	60	60.5	57			592.5
% Change		13.79%	16.95%	28.07%	34.62%	18.75%	9.62%	33.33%	35.29%	46.94%	37.50%			27.01%

	Year	Jan	Feb	Mar	Apr	May	Jun	Jul	Aug	Sep	Oct	Nov	Dec	Jan-Oct
Father Bills	2007	88	95	99	92	79	78	77	77	80	92	99	112	857
Father Bills	2008	111	108	105	94	93	103	101	100	100	95	116.67	132.00	1010
Delta		23	13	6	2	14	25	24	23	20	3			
Average		99.5	101.5	102	93	86	90.5	89	88.5	90	93.5			933.5
% Change		26.14%	13.68%	6.06%	2.17%	17.72%	32.05%	31.17%	29.87%	25.00%	3.26%			17.85%



Source: Excel Based Daily Census Counts from both
Father Bill's & MainSpring Individual Emergency Shelters

Individual Shelter Nightly Census



Source: AgencyDash.com – Daily Bed and Meal Census
July 1, 2008 to March 29, 2009

The Design Plans

Measurable Outcomes from Quincy's 10 Year Plan to End Chronic Homelessness:

- Reduce Inappropriate Discharges
- Decrease Cost of Emergency Services
- Increase Housing
- Improve Regional Collaboration and Support



CITY OF QUINCY, MASSACHUSETTS

10-YEAR PLAN TO END CHRONIC HOMELESSNESS

Submitted by:

Quincy Leadership Council on Chronic Homelessness

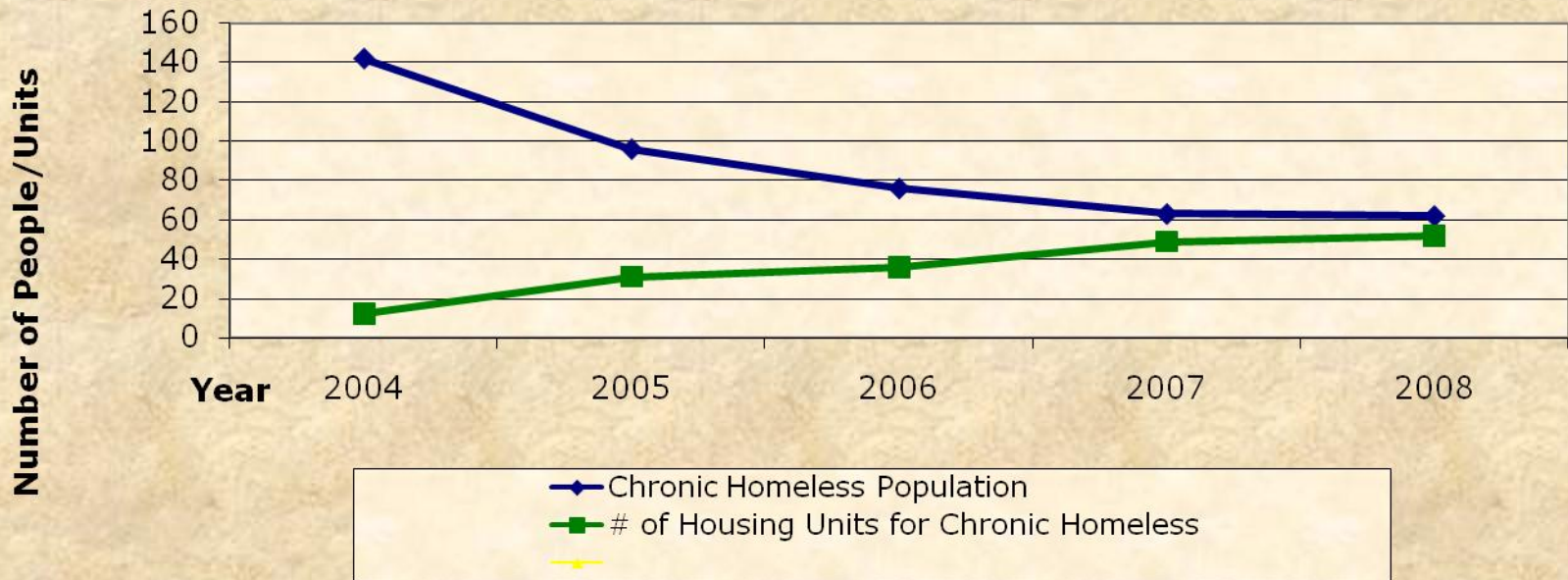
Prepared for:

Hon. William J. Phelan, Mayor of Quincy

June, 2005

Source: Quincy 10 Year Plan to End Chronic Homelessness

Chronic Homeless Population vs. Housing Units



- Closed an emergency shelter due to lack of need and took 35 total beds offline.
- 2+ years ahead of pace on the 10 year plan goal to build up 100-120 housing units for the chronically homeless with 52 new units



Questions?