



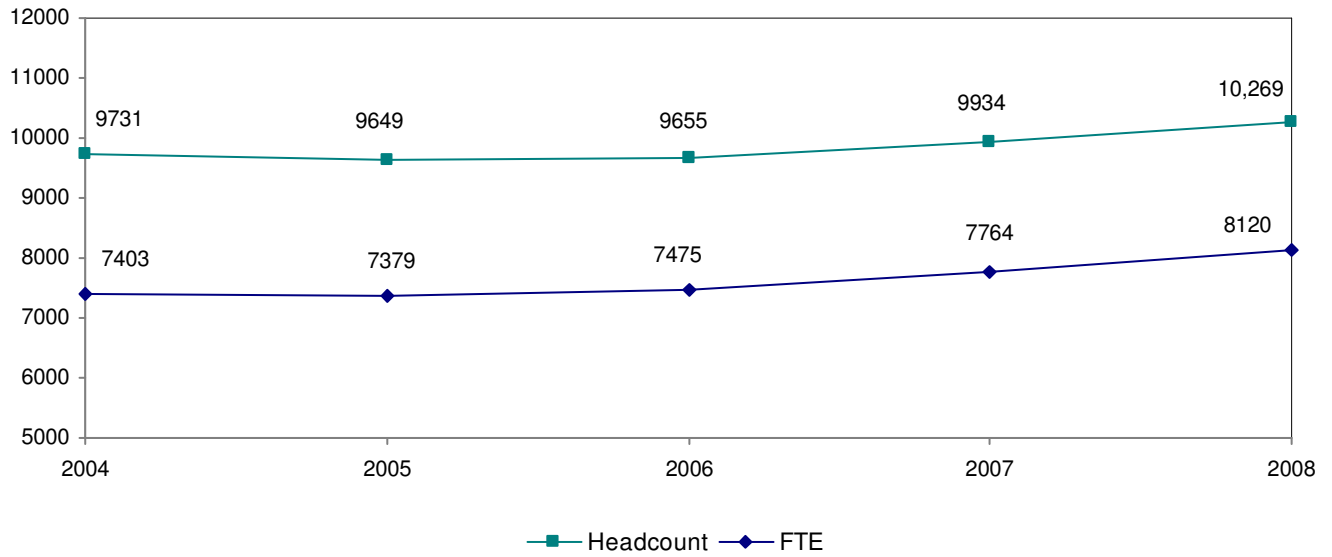
STUDENT ENROLLMENT

Total Undergraduates		8,497	Total Graduates		1,772
FTE	▶	7,324.3	FTE	▶	795.6
By Gender			By Gender		
Male	3,415 ▶	40%	Male	448 ▶	25%
Female	5,082 ▶	60%	Female	1,324 ▶	75%
				▶	
By Race/Ethnicity			By Race/Ethnicity		
Students of color	846 ▶	10%	Students of color	66 ▶	4%
International	91 ▶	1%	International	27 ▶	1%
By Status			By Status		
Full-time	7,145 ▶	84%	Full-time	361 ▶	20%
Part-time	1,352 ▶	16%	Part-time	1,411 ▶	80%
Average Age	▶	22	Average Age	▶	34
Declared Majors by School*			Declared Majors by School		
Arts & Sciences	5,262 ▶	59%	Arts & Sciences	471 ▶	38%
Education & Allied Studies	2,063 ▶	23%	Education & Allied Studies	710 ▶	57%
Business	1,607 ▶	18%	Business	57 ▶	5%
* includes double majors					
Class Distribution					
Freshmen	1,930 ▶	23%			
Sophomores	2,019 ▶	24%			
Juniors	2,074 ▶	24%			
Seniors	2,287 ▶	27%			
Unclassified	187 ▶	2%			

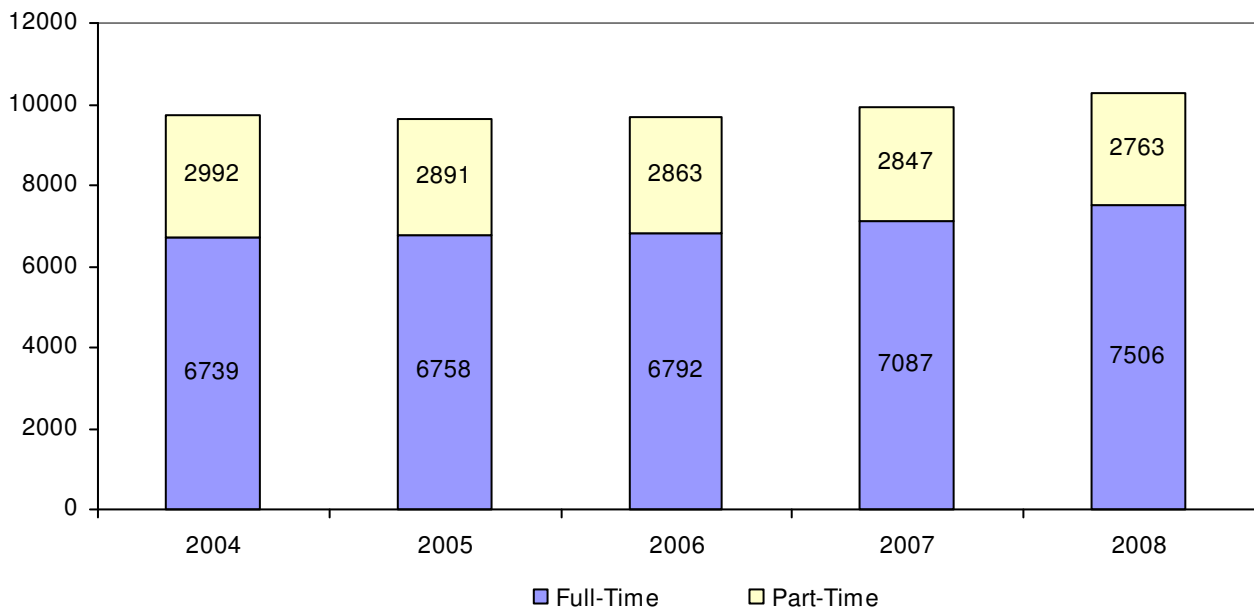
Total Fall Enrollment Fall 2004 – 2008

Total enrollment increased by 3 percent from Fall 2007 to Fall 2008. The number of full-time students also increased by 6 percent while the number of part-time students enrolled for Fall 2008 decreased by 3 percent from the previous year. In Fall 2008 about 73 percent of BSC students enrolled full-time.

Total Enrollment by Headcount and FTE



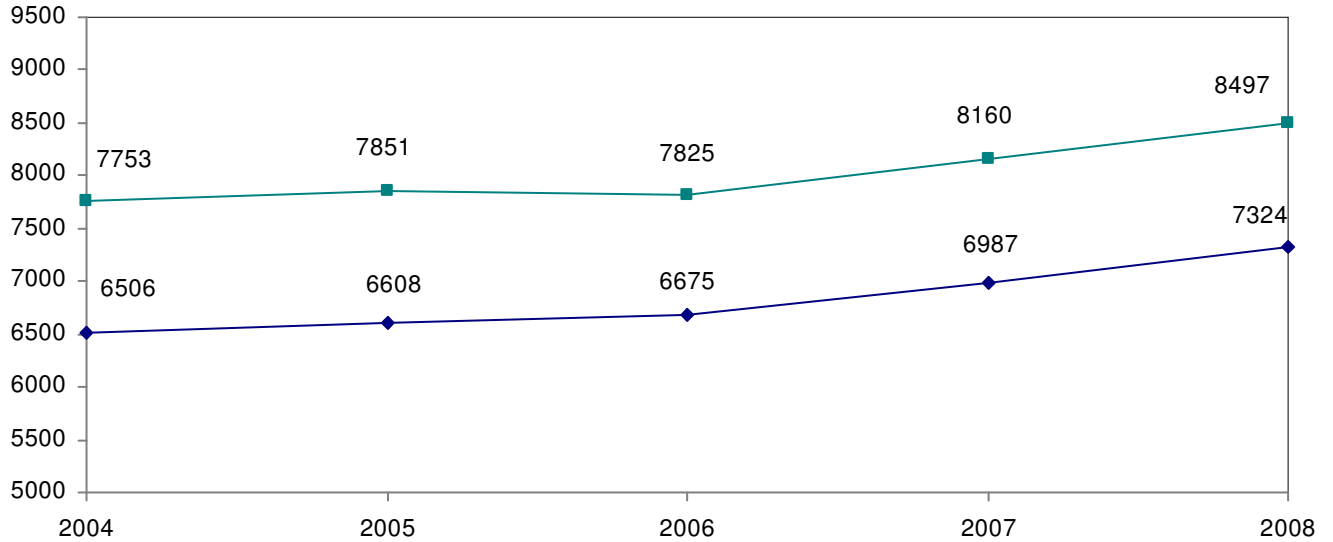
Total Enrollment by Status



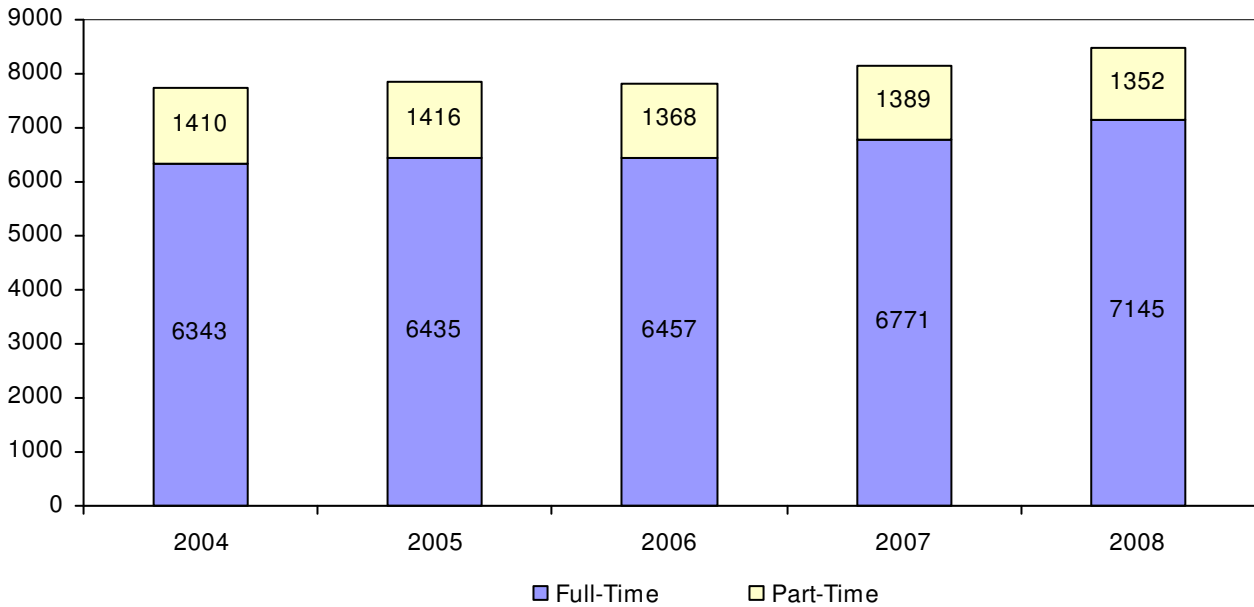
Undergraduate Fall Enrollment Fall 2004 – 2008

Overall undergraduate enrollment increased by 4 percent from Fall 2007 to Fall 2008. Full-time undergraduate enrollment increased 6 percent and part-time undergraduate enrollment decreased by 3 percent. In Fall 2008 16 percent of BSC undergraduates were enrolled part-time.

Undergraduate Enrollment by Headcount and FTE



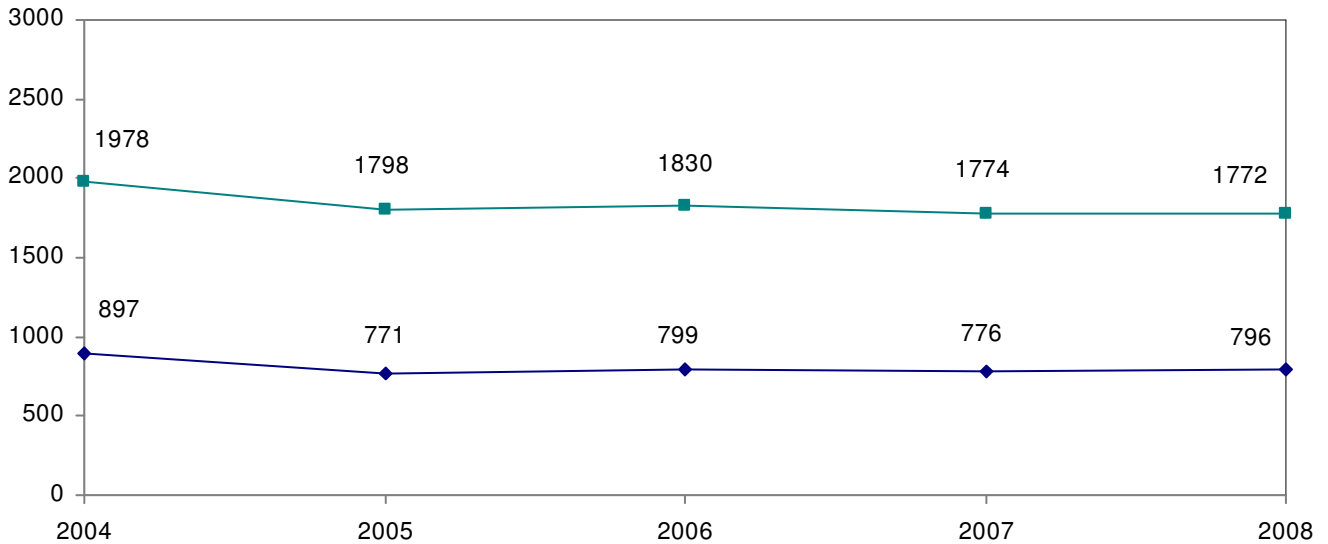
Undergraduate Enrollment by Status



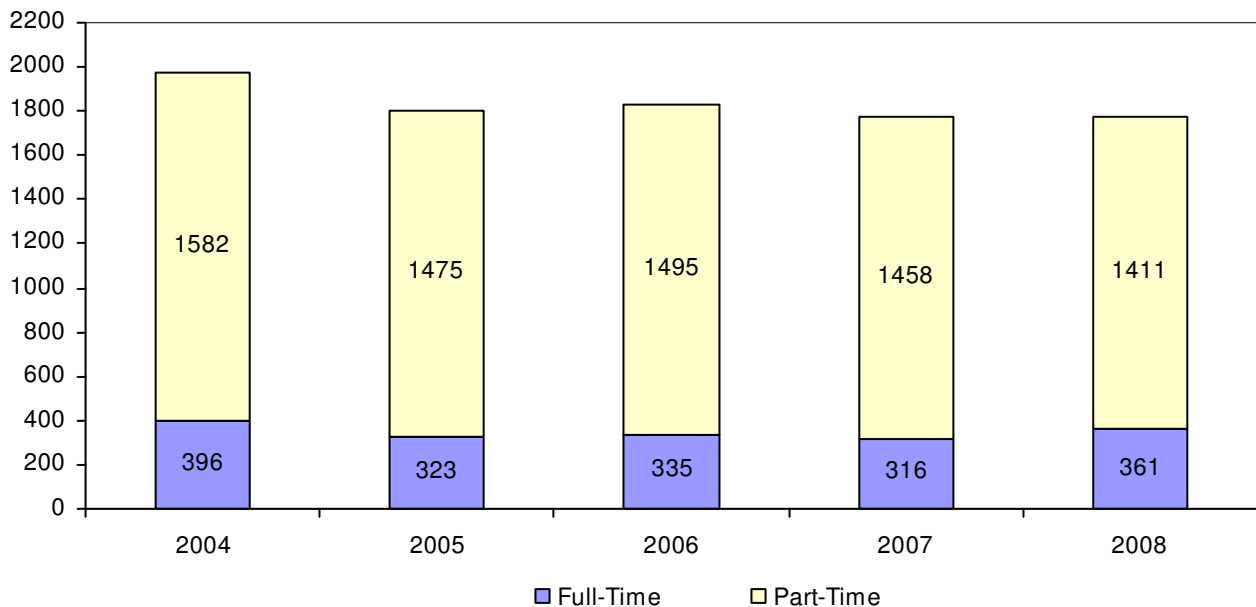
Graduate Fall Enrollment Fall 2004 – 2008

Graduate student enrollments decreased by less than 1 percent from Fall 2007 to Fall 2008. The number of part-time graduate students decreased by 3 percent while the number of full-time graduate students increased by 14 percent. As of Fall 2008, 80 percent of Bridgewater's graduate students study part-time.

Graduate Enrollment by Headcount and FTE



Graduate Enrollment by Status

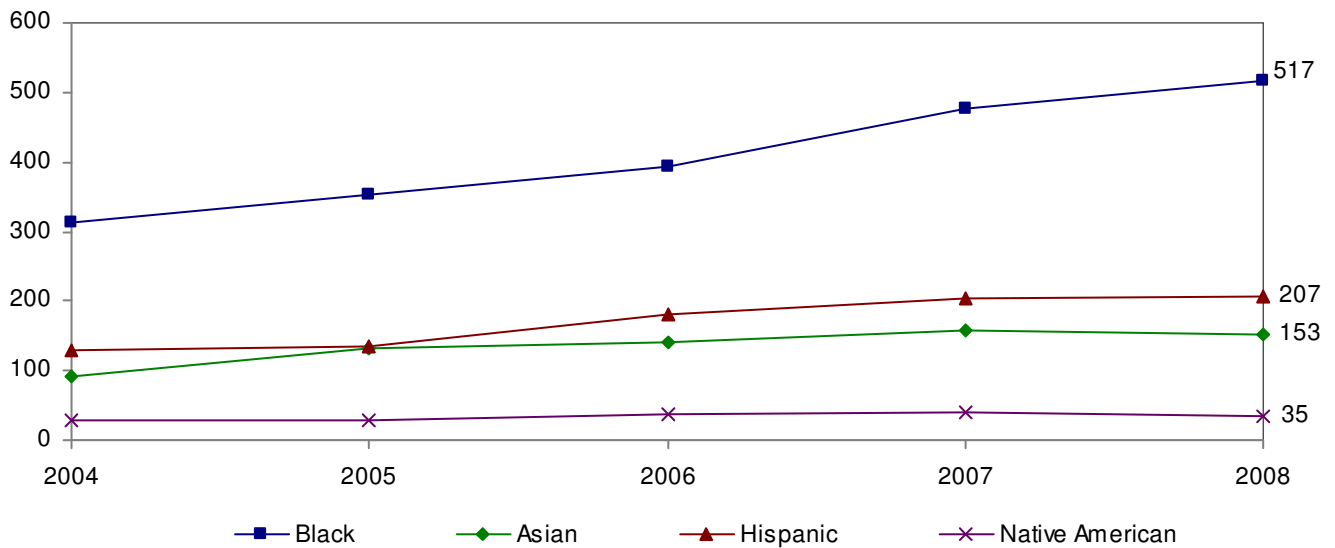


Enrollment by Race/Ethnicity and Gender Fall 2008

	Undergraduate			Graduate			Grand Total
	Male	Female	Total	Male	Female	Total	
Native American	13	18	31	1	3	4	35
Asian	51	91	142	4	7	11	153
Black	206	272	478	15	24	39	517
Hispanic	87	108	195	4	8	12	207
White	2699	4127	6826	325	1006	1331	8157
International	48	43	91	13	14	27	118
Other	40	59	99	7	18	25	124
Unknown	271	364	635	79	244	323	958
Total	3415	5082	8497	448	1324	1772	10,269
Students of color	357	489	846	24	42	66	912
% Students of color	10.5%	9.6%	9.9%	5.4%	3.2%	3.7%	8.9%

Students of Color Enrollments Fall 2004 – 2008

Enrollments for students of color increased by 4 percent from Fall 2007 to Fall 2008.



Note: Figures do not include international students of color

Age Distribution Fall 2004 – 2008

Undergraduate Students					
	2004	2005	2006	2007	2008
17-24	6300	6653	6721	7027	7370
25+	1394	1145	1084	1115	1111
Unknown	59	53	20	18	16
% 25+	18%	15%	14%	14%	13%
Average age all UG	23	22	22	22	22
Average age full-time	22	21	21	21	21
Average age part-time	30	29	28	28	29

Graduate Students					
	2004	2005	2006	2007	2008
17-24	177	297	301	291	285
25+	1757	1486	1520	1475	1482
Unknown	44	15	9	8	5
% 25+	89%	83%	83%	83%	84%
Average age all Grad.	35	34	34	34	34
Average age full-time	32	30	31	31	30
Average age part-time	36	35	35	35	35

Enrollment by Residence Fall 2004 - 2008

	2004	2005	2006	2007	2008
Massachusetts	9214	9177	9110	9360	9650
Other New England	229	233	245	265	256
Other United States	83	79	91	100	97
Unknown	30	58	89	111	148
International	175	102	120	98	118
% In-State	95%	95%	94%	94%	94%

**Countries of Origin: International Students
Fall 2003 – 2008***

	Fall 2003	Fall 2005	Fall 2006	Fall 2007	Fall 2008
Argentina	0	0	1	0	0
Albania	1	1	0	0	0
Angola	0	0	0	1	1
Australia	2	0	0	0	0
Belarus	0	1	0	0	0
Benin	0	0	0	0	1
Bermuda	0	0	0	0	1
Brazil	2	1	5	4	7
Bulgaria	3	1	0	1	2
Cameroon	0	0	1	2	2
Canada	2	0	2	4	1
Cape Verde	3	4	4	3	13
China	7	5	5	3	9
Colombia	1	0	0	0	0
Cote d'Ivoire	1	1	1	0	0
Czech Republic	1	1	1	0	0
Egypt	0	0	0	0	1
Germany	3	0	0	0	0
Hong Kong	1	1	0	0	3
Hungary	3	1	0	0	0
India	9	1	0	1	2
Ireland	0	0	5	0	7
Japan	87	66	68	56	44
Jordan	0	0	0	0	6
Kenya	11	5	4	4	1
Lebanon	0	0	0	1	1
Lithuania	1	0	1	0	0
Mali	0	0	0	1	1
Malawi	1	0	0	0	0

* Fall 2004 data not available

**Countries of Origin: International Students
Fall 2003 – 2008* (continued)**

	Fall 2003	Fall 2005	Fall 2006	Fall 2007	Fall 2008
Mexico	1	0	0	0	0
Nepal	1	0	0	1	1
Netherlands	1	0	0	0	0
New Zealand	1	1	1	0	0
Nigeria	1	0	0	0	0
North Korea	0	0	0	0	0
Poland	1	0	0	1	2
Portugal	3	1	2	1	0
Russia (Soviet Union)	1	0	0	0	0
Serbia and Montenegro	0	0	1	0	0
South Africa	0	0	2	3	1
South Korea	2	0	1	3	0
Sweden	0	1	0	1	1
Taiwan	4	1	1	0	0
Tanzania	0	0	0	0	1
Thailand	2	0	0	0	0
Turkey	0	0	2	1	1
United Kingdom	7	1	7	4	5
Uzbekistan	0	0	0	1	0
Venezuela	1	1	1	1	1
Vietnam	2	1	1	0	0
Zaire	0	0	0	0	1
Zimbabwe	1	0	0	0	0
Unknown	1	6	3	0	1
Total	169	102	120	98	118

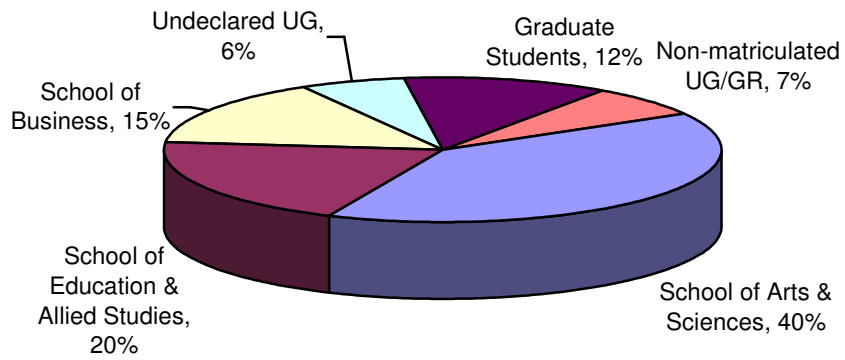
* Fall 2004 data are not available

Headcount Enrollment by School, Class & Gender Fall 2008

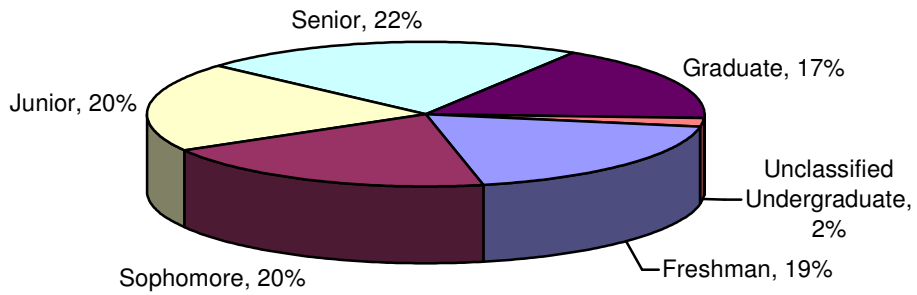
	Male	Female	Total	% Female
School of Arts & Sciences				
Freshmen	375	443	818	54%
Sophomores	424	512	963	55%
Juniors	477	638	1115	57%
Seniors	470	760	1230	62%
Unclassified	0	0	0	0%
Total	1746	2353	4099	57%
School of Education & Allied Studies				
Freshmen	70	390	460	85%
Sophomores	100	399	499	80%
Juniors	108	391	499	78%
Seniors	106	460	566	81%
Total	384	1640	2024	81%
School of Business				
Freshmen	170	111	281	40%
Sophomores	237	154	391	39%
Juniors	245	177	422	42%
Seniors	298	187	485	39%
Unclassified	0	1	1	100%
Total	950	630	1580	40%
Undeclared Undergraduates				
Freshmen	153	218	371	59%
Sophomores	78	115	193	60%
Juniors	23	15	38	39%
Seniors	2	4	6	67%
Total	256	352	608	58%
Graduate Students				
Post-Baccalaureate Certification	45	105	150	70%
Graduate Certificates	11	20	31	65%
MA	17	71	88	81%
MS	95	83	178	47%
MAT	23	76	99	77%
MEd	75	420	495	85%
MPA	16	15	31	48%
MSW	15	96	111	86%
CAGS	17	46	63	73%
Post-Master's Certification	7	16	23	70%
Total	321	948	1269	75%
Non-Matriculating				
Undergraduate	79	107	186	58%
Graduate	127	376	503	75%
Total	206	483	689	70%
Total Headcount for Fall 2008	3863	6406	10,269	62%

Note: School enrollment determined by student's first major

Enrollment by School Fall 2008



Enrollment by Grade Level Fall 2008



Total Majors Declared by Level & Year Fall 2004 - 2008

School of Arts and Sciences Baccalaureate Level					
	2004	2005	2006	2007	2008
Anthropology	36	43	44	43	59
Cultural Anthropology	32	36	38	20	26
General Anthropology	NA	NA	3	9	14
Public Archaeology	4	7	3	14	19
Art	216	267	291	281	301
Art Education	NA	16	32	35	54
Art History	NA	7	13	18	15
Crafts	23	30	30	16	20
Fine Arts	118	131	114	99	74
Graphic Design	75	67	69	74	97
Photography	NA	16	33	39	44
Biological Sciences	204	215	257	260	266
Biology	156	150	157	143	117
Biology Teacher Education	NA	4	1	1	2
Biomedical	13	13	1	0	0
Biomedical/Molecular	16	30	82	89	110
Cell/Molecular Biology	3	3	0	0	0
Environmental Biology	16	15	16	27	37
Chemical Sciences	62	85	72	79	85
<i>Chemistry</i>	59	80	67	65	78
Biochemistry	17	27	23	29	29
Chemistry	31	41	23	16	21
Environmental Chemistry	2	4	2	1	5
Professional Chemistry	9	8	19	19	23
<i>Chemistry-Geology</i>	3	5	5	14	7
Communication Studies	377	397	421	460	488
Communication Studies	377	397	421	460	435
Corporate Communication	NA	NA	NA	NA	21
Individualized Program	NA	NA	NA	NA	5
Media/Communication Technologies	NA	NA	NA	NA	27
Criminal Justice	632	653	686	716	758
Earth Sciences	57	49	71	60	67
Earth Science	37	42	57	50	52
Environmental Geo-Science	11	3	3	6	9
Geology	9	4	11	4	6

Note: Includes double majors except for 2004 data. Comparisons with 2004 data should be made with caution.

Total Majors Declared by Level & Year Fall 2003 - 2007

School of Arts and Sciences Baccalaureate Level					
	2004	2005	2006	2007	2008
English	328	458	533	551	593
English	272	393	410	413	407
English Education	8	14	64	79	110
Writing	48	51	59	59	76
Foreign Languages	40	57	73	72	87
Spanish	40	57	73	72	87
Geography	28	41	43	32	46
Environmental Geography	7	8	1	1	0
Geography	16	26	36	31	45
Geotechnology	4	4	2	0	1
Regional & Economic Planning	1	3	4	0	0
History	257	356	387	438	466
History	254	353	381	434	463
Military History	3	3	6	4	3
Mathematics & Computer Science	284	310	297	301	333
Mathematics	119	162	181	175	197
Computer Science	165	148	116	126	136
Music	49	65	62	73	61
Music	42	56	51	55	39
Music Education	7	9	11	18	22
Philosophy	22	18	22	20	21
Applied Ethics	0	0	1	1	1
Philosophy	22	18	21	19	20
Physics	25	30	30	31	30
Physics	23	21	19	25	20
Professional Physics	2	9	11	6	10
Political Science	117	120	126	122	121
American Politics	7	8	13	23	18
International Affairs	3	5	7	7	19
Legal Studies	16	22	18	10	16
Political Science	91	85	88	82	65
Public Administration	NA	NA	NA	NA	3

Note: Includes double majors except for 2004 data. Comparisons with 2004 data should be made with caution.

**Total Majors Declared by Level & Year
Fall 2004 - 2008**

School of Arts and Sciences Baccalaureate Level					
	2004	2005	2006	2007	2008
Psychology	533	1010	991	961	981
Child Psychology	NA	47	70	58	94
Industrial-Organizational Psychology	3	5	3	2	4
Industrial-Personnel Psychology	4	2	0	0	0
Medical Psychology	1	2	0	0	0
Medical Health Psychology	NA	3	7	5	9
Psychology	525	951	911	896	883
Social Work	164	175	196	195	201
Sociology	73	133	160	174	178
City, Community & Region	NA	NA	NA	1	7
Global Studies	NA	NA	NA	1	2
Sociology	70	132	160	159	142
Sociology Education	NA	NA	NA	11	26
Third World Studies	3	1	0	2	1
Theater & Dance	60	92	105	126	120
Dance Education	20	32	38	50	49
Theater Arts	32	49	61	68	65
Theater/Dance/Speech	3	2	0	0	0
Theater Education	5	9	6	8	6

Note: Includes double majors except for 2004 data. Comparisons with 2004 data should be made with caution.

Total Majors Declared by Level & Year Fall 2004 – 2008

School of Education and Allied Studies Baccalaureate Level					
	2004	2005	2006	2007	2008
Elementary & Early Childhood Education	1148	1123	1108	1154	1188
<i>Elementary Education</i>	807	798	765	779	809
Elementary Education	743	720	676	696	695
Elementary/Special Education	64	78	89	83	114
<i>Early Childhood Education</i>	341	325	343	375	379
Early Childhood	341	325	324	316	287
Early Education & Care (PreK-K)	NA	NA	19	59	92
Movement Arts, Health Promotion & Leisure Studies	492	535	561	600	583
Athletic Training	49	12	7	100	112
Athletic Training Education	NA	42	61	0	0
Coaching	15	19	20	22	22
Exercise Science/Health Fitness	82	123	119	150	153
Health Education	49	43	47	60	52
Motor Development Therapy	47	37	35	28	23
Physical Education	182	155	168	140	100
Recreation	13	14	19	12	14
Recreation/Fitness Club Administration	9	11	4	5	7
Teaching Certification	46	79	81	83	100
Special Education & Communication Disorders	208	241	230	263	292
Communication Disorders	131	144	123	148	158
Special Education Moderate Disabilities	51	73	84	80	97
Special Education Severe Disabilities	26	24	23	35	37

Note: Includes double majors except for 2004 data. Comparisons with 2004 data should be made with caution.
~ No longer accepting new students

**Total Majors Declared by Level & Year
Fall 2004 – 2008**

School of Business Baccalaureate Level					
	2004	2005	2006	2007	2008
Accounting & Finance	338	330	352	410	486
Accounting	226	210	230	270	313
Finance	112	120	122	140	173
Aviation Science	222	216	243	211	186
Airport Management	1	2	0	0	0
Aviation Management	49	52	53	46	35
Flight Training	172	162	190	165	151
Economics	34	34	48	43	45
Management	736	767	824	854	890
Energy and Environmental Management	14	12	12	7	6
General Management	451	497	525	576	602
Global Management	31	28	19	23	17
Information Systems Management	84	73	110	56	38
Marketing	153	155	157	190	218
Operations Management	NA	NA	NA	NA	6
Transportation	3	2	1	2	3

Note: Includes double majors except for 2004 data. Comparisons with 2004 data should be made with caution.

**Total Majors Declared by Level & Year
Fall 2004 – 2008**

Master of Arts/Science (MA/MS)					
	2004	2005	2006	2007	2008
Computer Science	16	14	12	12	19
Criminal Justice	23	20	19	20	35
Administration of Justice	4	6	5	1	8
Crime and Corrections	1	1	2	2	2
Criminal Justice	18	13	12	17	25
English	15	20	22	27	39
Creative Writing	NA	NA	3	3	1
English	15	20	19	24	38
Management	55	54	55	55	57
Accounting	24	22	27	28	26
Marketing	5	5	5	3	2
Organizational Development	18	15	12	14	16
Technology Management	8	12	11	10	13
Physical Education	39	47	57	66	67
Applied Kinesiology	NA	NA	8	8	10
Adapted Physical Education	NA	NA	3	2	3
Athletic Training	5	12	9	15	19
Human Performance and Health Fitness	3	5	13	18	13
Individualized Physical Education	6	10	10	8	4
Sport Human Performance	25	17	8	3	0
Strength and Conditioning	NA	3	6	12	18
Psychology	45	49	44	51	49

Master of Arts in Teaching (MAT)					
	2004	2005	2006	2007	2008
Biology	8	9	17	14	10
Creative Arts	4	4	7	7	11
English	7	10	13	25	23
History	13	12	20	18	18
Math	10	9	12	17	23
Music	NA	NA	NA	NA	1
Music Education	NA	NA	2	7	8
Physical Sciences	0	0	4	2	5
Physics	2	0	1	1	0

**Total Majors Declared by Level & Year
Fall 2004 – 2008**

Master of Public Administration (MPA)					
	2004	2005	2006	2007	2008
Public Administration	34	22	28	34	31
Administration & Finance	NA	NA	NA	1	1
Civic & Non-Profit Leadership	NA	NA	NA	NA	1
Public Administration	34	22	25	26	22
Municipal Development	NA	NA	NA	2	1
Non-Profit Administration	NA	NA	3	5	5
Sustainable Community Development	NA	NA	NA	NA	1
Master of Social Work (MSW)					
	2004	2005	2006	2007	2008
Social Work	76	96	111	110	111
Master of Education (MEd)					
	2004	2005	2006	2007	2008
Counselor Education	116	105	98	91	81
Counseling	116	105	98	91	81
Elementary & Early Childhood Education	186	212	175	154	149
Early Childhood Education	23	30	31	27	33
Elementary Education	69	95	89	87	97
Reading Education	94	87	55	40	19
Movement Arts, Health Promotion & Leisure Studies	7	5	4	4	5
Health Promotion	7	5	4	4	5
Secondary Education & Professional Programs	56	41	50	54	61
Instructional Technology	21	22	20	21	28
Educational Leadership	35	19	30	33	33
Special Education & Communication Disorders	120	125	149	180	199
Special Education	113	120	125	180	199
Certificate of Advanced Graduate Study (CAGS) and Post-Master's Certification					
	2004	2005	2006	2007	2008
CAGS in Education	105	64	71	71	63
Counseling	14	8	11	12	12
Reading	5	9	12	18	1
Educational Leadership	86	47	48	41	50
Post-Master's Certification	5	3	0	40	23
Counseling	2	2	0	0	5
Educational Leadership	NA	NA	NA	40	18
Instructional Technology	3	1	0	0	0

Total Majors Declared by Level & Year Fall 2004 – 2008

Post-Baccalaureate and Accelerated Post-Baccalaureate Certification					
	2004	2005	2006	2007	2008
Elementary & Early Childhood Education	63	46	27	13	14
Early Childhood Education	12	6	5	3	1
Elementary Education	51	40	22	10	13
Movement Arts, Health Promotion & Leisure Studies	12	12	17	16	11
Health Education	1	2	2	2	0
Physical Education	11	10	15	14	11
Secondary Education & Professional Programs	128	118	124	95	97
Art	14	10	11	9	10
Biology	12	12	11	11	11
Chemistry	5	1	2	2	0
Earth Science	3	3	3	1	2
Educational Leadership	1	10	29	8	6
English	28	26	18	19	21
History	18	17	13	12	16
Instructional Technology	NA	NA	NA	NA	3
Mathematics	38	32	26	26	23
Music	5	1	4	4	5
Physics	0	2	1	1	0
Political Science	NA	NA	1	0	0
Spanish	3	4	5	2	0
Theater	1	0	0	0	0
Special Education & Communication Disorders	21	18	19	31	28
Special Education	21	18	19	31	28

Certificate Programs					
	2004	2005	2006	2007	2008
Undergraduate Certificates	4	5	7	3	1
Accounting and Finance	3	3	4	1	0
Management	0	0	2	0	0
Marketing Management	1	2	1	1	1
Graduate Certificates	16	14	21	24	31
Accounting and Finance	11	10	14	20	22
Information Systems Management	1	1	0	0	0
Instructional Technology	3	2	3	1	7
Management	1	1	4	3	2

**Graduate Programs
Students Enrolled
Fall 2008**

	Total	MA/MS MPA/ MSW	MEd	MAT	PB/APB	CAGS	PM
Art	10	*	*	*	10	*	*
Biology	21	*	*	10	11	*	*
Chemistry	0	*	*	*	0	*	*
Computer Science	19	19	*	*	*	*	*
Counseling	98	*	81	*	*	12	5
Creative Arts	11	*	*	11	*	*	*
Criminal Justice	35	35	*	*	*	*	*
Early Childhood Ed.	34	*	33	*	1	*	*
Earth Science	2	*	*	*	2	*	*
Educational Leadership	107	*	33	*	6	50	18
Elementary Education	110	*	97	*	13	*	*
English	83	39	*	23	21	*	*
Health Education	0	*	*	*	0	*	*
Health Promotion	5	*	5	*	*	*	*
History	34	*	*	18	16	*	*
Instructional Technology	31	*	28	*	3	*	*
Management	57	57	*	*	*	*	*
Mathematics	46	*	*	23	23	*	*
Music	14	*	*	9	5	*	*
Physical Education	78	67	*	*	11	*	*
Physical Sciences	5	*	*	5	*	*	*
Physics	0	*	*	0	0	*	*
Political Science	0	*	*	*	0	*	*
Psychology	49	49	*	*	*	*	*
Public Administration	31	31	*	*	*	*	*
Reading Education	20	*	19	*	*	1	*
Social Work	111	111	*	*	*	*	*
Spanish	0	*	*	*	0	*	*
Special Education	227	*	199	*	28	*	*
Theater	0	*	*	*	0	*	*
Total	1238	408	495	99	150	63	23

*Degree not offered in subject

Total Majors by Department and Gender Fall 2008

School of Arts and Sciences Undergraduate and Graduate Majors				
	Male	Female	Total	% Female
Social Work	30	282	312	90%
Foreign Languages	10	77	87	89%
Psychology	124	915	1039	88%
Sociology	23	155	178	87%
Earth Sciences	14	53	67	79%
English	147	508	655	78%
Art	73	242	315	77%
Theater & Dance	29	91	120	76%
Anthropology	15	44	59	75%
Biology	94	182	276	66%
Communication Studies	208	280	488	57%
Music	31	39	70	56%
Chemical Sciences	40	45	85	53%
Political Science	74	78	152	51%
Geography	23	23	46	50%
History	246	238	484	49%
Mathematics & Computer Science	220	155	375	41%
Criminal Justice	512	281	793	35%
Philosophy	14	7	21	33%
Physics	26	4	30	13%
Total	1953	3699	5652	65%

School of Education and Allied Studies Undergraduate and Graduate Majors				
	Male	Female	Total	% Female
Elementary & Early Childhood Ed.	60	1292	1352	96%
Special Education & Comm. Disorders	59	460	519	89%
Counselor Education	17	81	98	83%
Secondary & Professional Ed.	70	163	233	70%
Movement Arts, Health Promotion...	367	299	666	45%
Total	573	2295	2868	80%

School of Business Undergraduate and Graduate Majors				
	Male	Female	Total	% Female
Accounting & Finance	268	240	508	47%
Management	543	407	950	43%
Economics	28	17	45	38%
Aviation Science	163	23	186	12%
Total	1002	687	1689	41%

Note: Includes double majors

Total Majors by Department and Race Fall 2008

School of Arts and Sciences Undergraduate and Graduate Majors

	Native American	Asian	Black	Hispanic	White	International Students	Other/ Unknown	Total	% <i>Students of Color</i>
Foreign Languages	0	2	6	11	60	0	8	87	22%
Social Work	1	2	43	8	221	0	37	312	17%
Chemical Sciences	1	3	6	2	64	4	5	85	14%
Political Science	0	3	12	6	114	1	16	152	14%
Criminal Justice	7	11	51	31	635	0	58	793	13%
Biological Sciences	2	5	19	6	213	4	27	276	12%
Psychology	1	12	63	17	875	4	67	1039	9%
Communication Studies	0	4	29	13	394	5	43	488	9%
Anthropology	1	2	2	0	46	0	8	59	8%
Mathematics & Computer Science	0	10	18	3	311	12	21	375	8%
Sociology	1	1	11	2	144	0	19	178	8%
Art	1	13	4	4	259	3	31	315	7%
Physics	0	0	2	0	22	0	6	30	7%
History	7	6	10	5	420	0	36	484	6%
English	1	6	17	8	557	1	65	655	5%
Earth Sciences	0	1	1	1	60	0	4	67	4%
Theater & Dance	0	0	4	0	105	1	10	120	3%
Geography	0	0	0	1	40	3	2	46	2%
Music	0	1	0	0	60	1	8	70	1%
Philosophy	0	0	0	0	16	1	4	21	0%
Total	22	82	298	118	4634	40	477	5652	9%

Note: Includes double majors

**Total Majors by Department and Race
Fall 2008**

**School of Education and Allied Studies
Undergraduate and Graduate Majors**

	Native American	Asian	Black	Hispanic	White	International Students	Other/ Unknown	Total	% Students of Color
Movement Arts, Health Prom.	2	0	31	13	561	5	54	666	7%
Counselor Education	0	2	1	2	86	1	6	98	5%
Elementary & Early Child Ed.	1	17	41	10	1208	1	74	1352	5%
Special Education & Comm. Dis.	3	4	9	7	458	1	37	519	4%
Secondary & Professional Ed.	2	1	6	0	195	3	26	233	4%
Total	8	24	88	32	2508	11	197	2868	5%

**School of Business
Undergraduate and Graduate Majors**

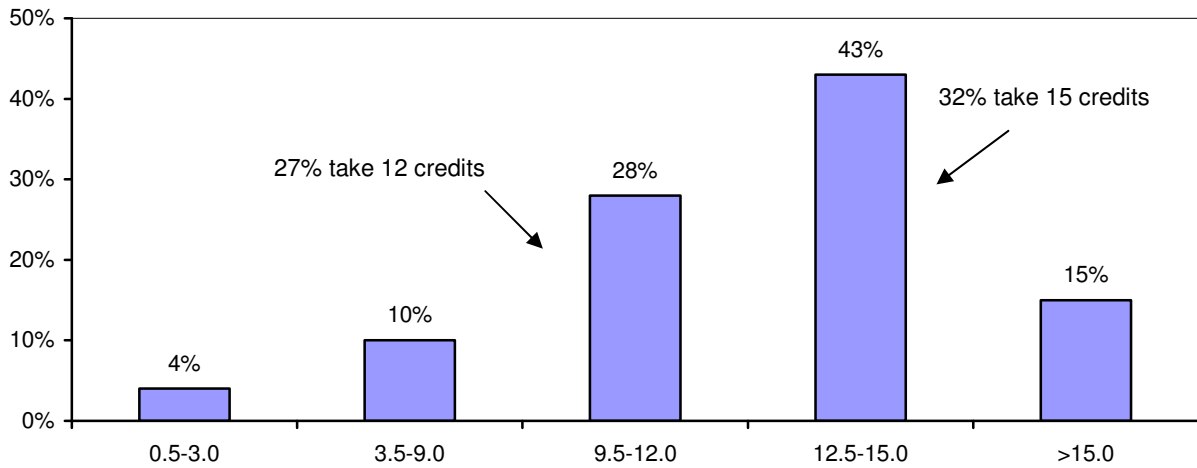
	Native American	Asian	Black	Hispanic	White	International Students	Other/ Unknown	Total	% Students of Color
Accounting & Finance	0	17	49	16	367	6	53	508	16%
Economics	0	3	2	1	29	2	8	45	13%
Management	1	30	62	26	743	21	67	950	13%
Aviation Science	1	5	10	7	141	9	13	186	12%
Total	2	55	123	50	1280	38	141	1689	14%

Note: Includes double majors

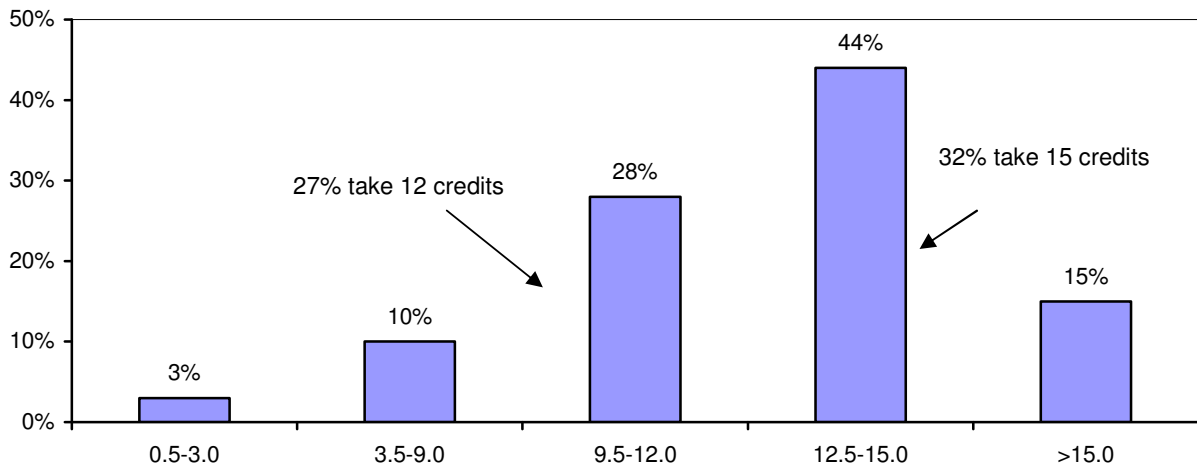
Distribution of Undergraduate Credit Loads Fall 2008

Nearly 60 percent of all BSC undergraduates carried more than 12 credits during Fall 2008. The average credit load among matriculated undergraduate students was slightly higher than for the entire undergraduate student body.

**Credit Loads of All Undergraduates
(Average credit load = 12.9 credits)**



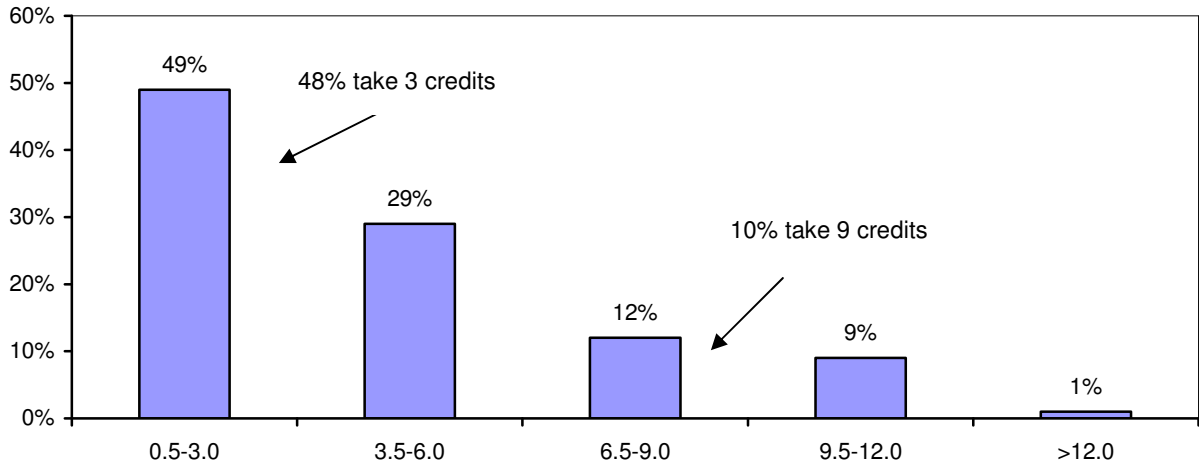
**Credit Loads of Matriculated Undergraduates
(Average credit load = 13.0 credits)**



Distribution of Graduate Credit Loads Fall 2008

Almost half of all graduate students carried 3 or fewer credits. Among matriculated graduate students, this figure drops to 35 percent. Nearly a third of matriculated graduate students carry more than 6 credits, compared to 20 percent of graduate students overall.

**Credit Loads of All Graduate Students
(Average credit Load = 5.4 credits)**



**Credit Loads of Matriculated Graduate Students
(Average credit load = 6.0 credits)**

