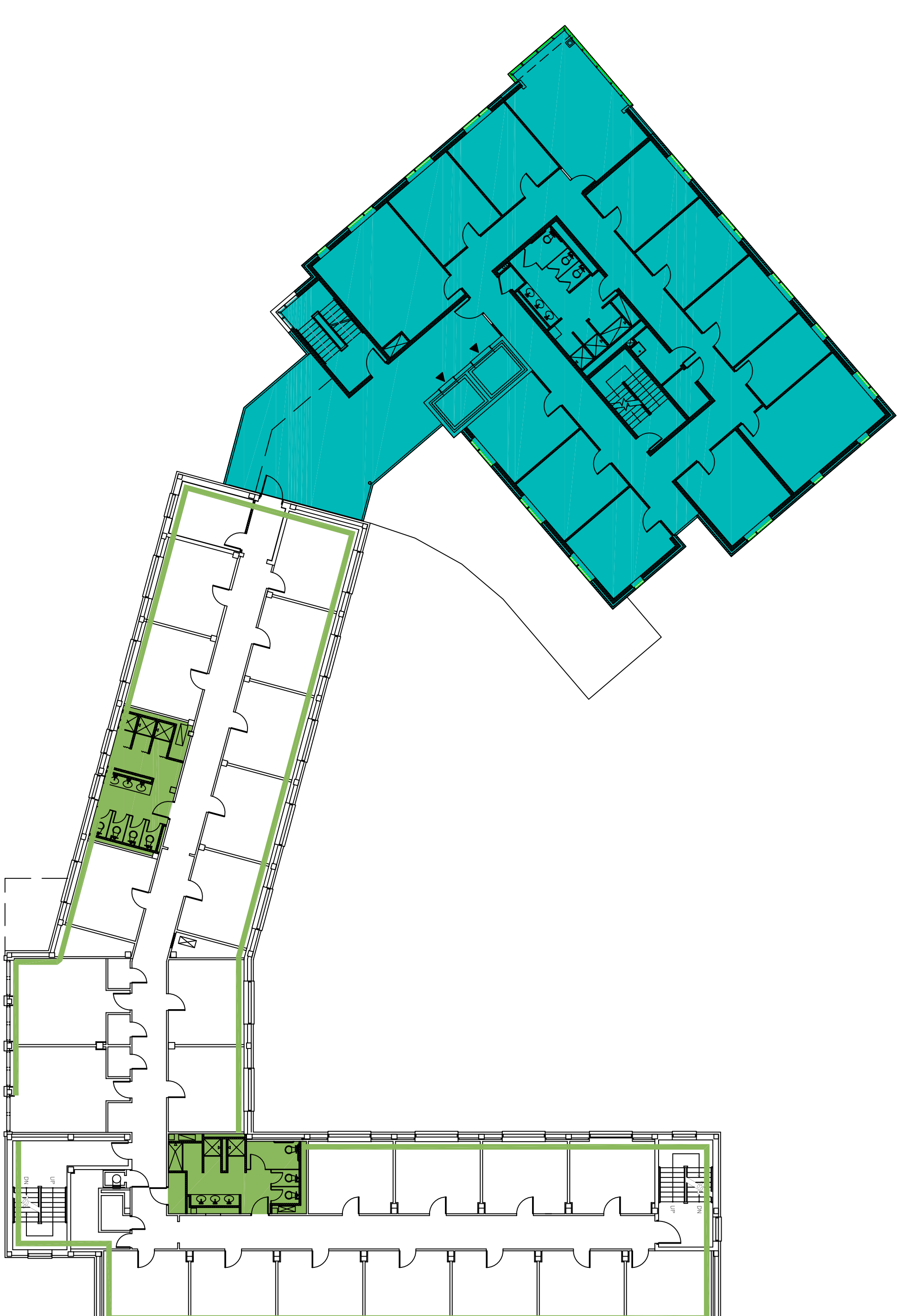


**FIRST FLOOR**



**TYPICAL FLOOR 2-3**

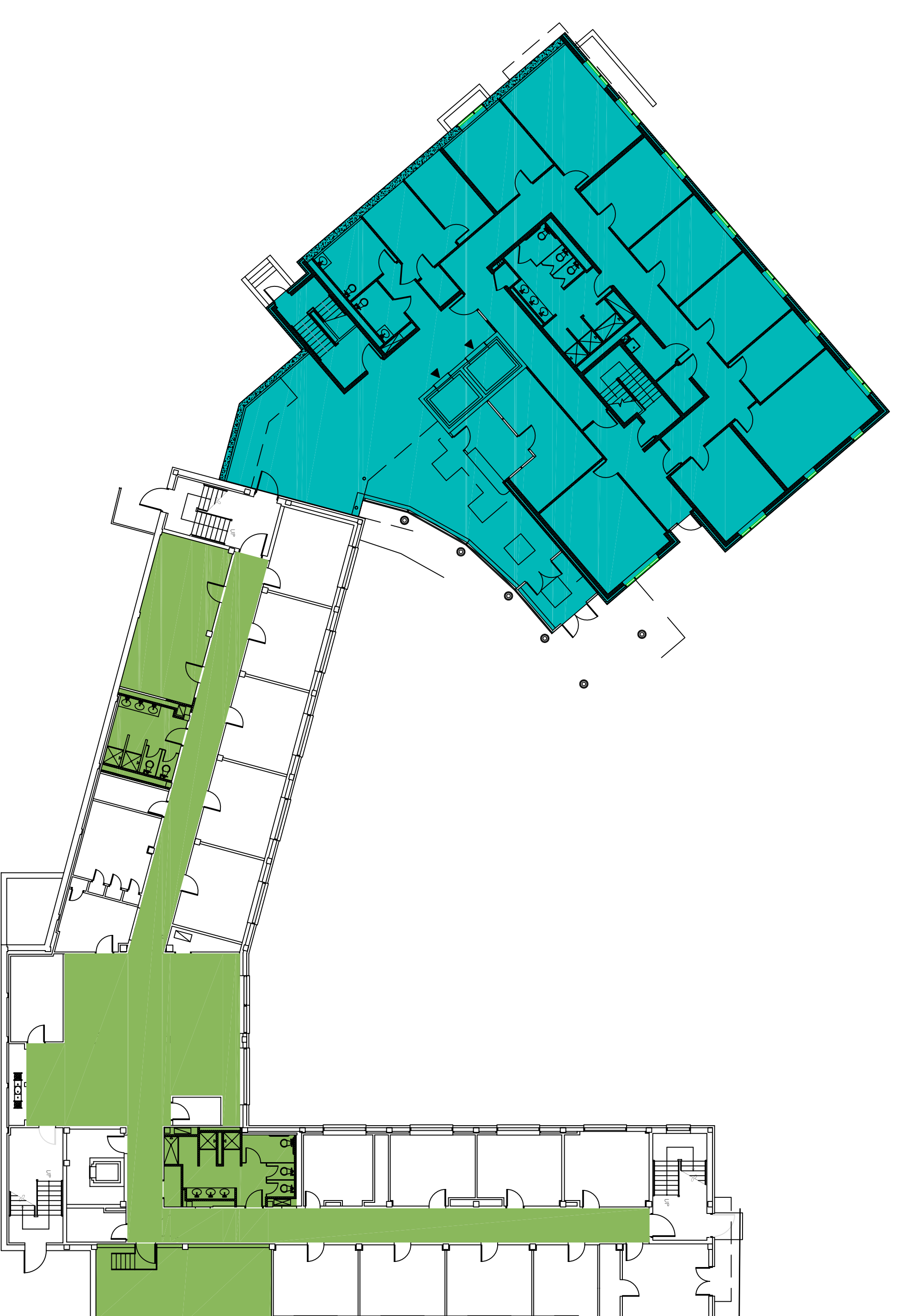
# SCOTT HALL

## CONSTRUCTION ZONES - SUMMER 2008

**May 21 - August 8**

### SCOPE OF WORK:

- CONTINUE WITH ADDITION FOUNDATIONS, STRUCTURE AND INFRASTRUCTURE
- BUILD NEW HEATING PLANT
- BUILD NEW MAIN ELECTRIC SERVICE, BACKFEED PANELS AT EACH FLOOR
- ROOFTOP EQUIPMENT FOR EAST & SOUTH FRESH AIR LOOPS (EXHAUST SIDE TO BE FULLY OPERATIONAL AT END OF PHASE)
- ALL HVAC WORK FOR EAST SIDE FRESH AIR LOOP SUPPLY SIDE WITHIN BATH CORES
- COMPLETE BATHROOM SCOPE IN EXISTING BUILDING WITH THE EXCEPTION OF THE RD APARTMENT
- COMPLETE SANITARY SCOPE IN EXISTING BUILDING, INCLUDING STREET TAP



**GROUND FLOOR**

### SCOPE (cont'd):

- COMPLETE BASEBOARD HW HEATING SCOPE IN EXISTING BUILDING
- TEMPORARY REMOVAL AND REINSTALLATION OF EXISTING SUSPENDED CEILINGS TO FACILITATE OTHER TRADES' WORK
- LIMITED ABATEMENT SCOPE PER PLANS
- EXISTING FIRE ALARM, FIRE PROTECTION, SECURITY AND VOICE DATA VIDEO SYSTEMS ARE EXISTING TO REMAIN / PROTECT FROM DAMAGE



**CONSIGLI**

Est. 1905