

## DIRECTOR'S NOTES

### TO OUR YOUNG AUDIENCES

We hope you will enjoy seeing a story you may have heard and liked come to life in person before your eyes. If you already know the story, you may get more fun from thinking about the ways the play is different from the book. If you have been to our plays before, you will remember them as always being very bright and happy. This year is a little bit different, because Charlotte, like all spiders, only lives for one season, so we're all sorry when she wears out and passes away. As you will see, her babies are still there waiting for the new spring to be born, and arrive then to start the life cycle over again.

### TO THE ADULTS

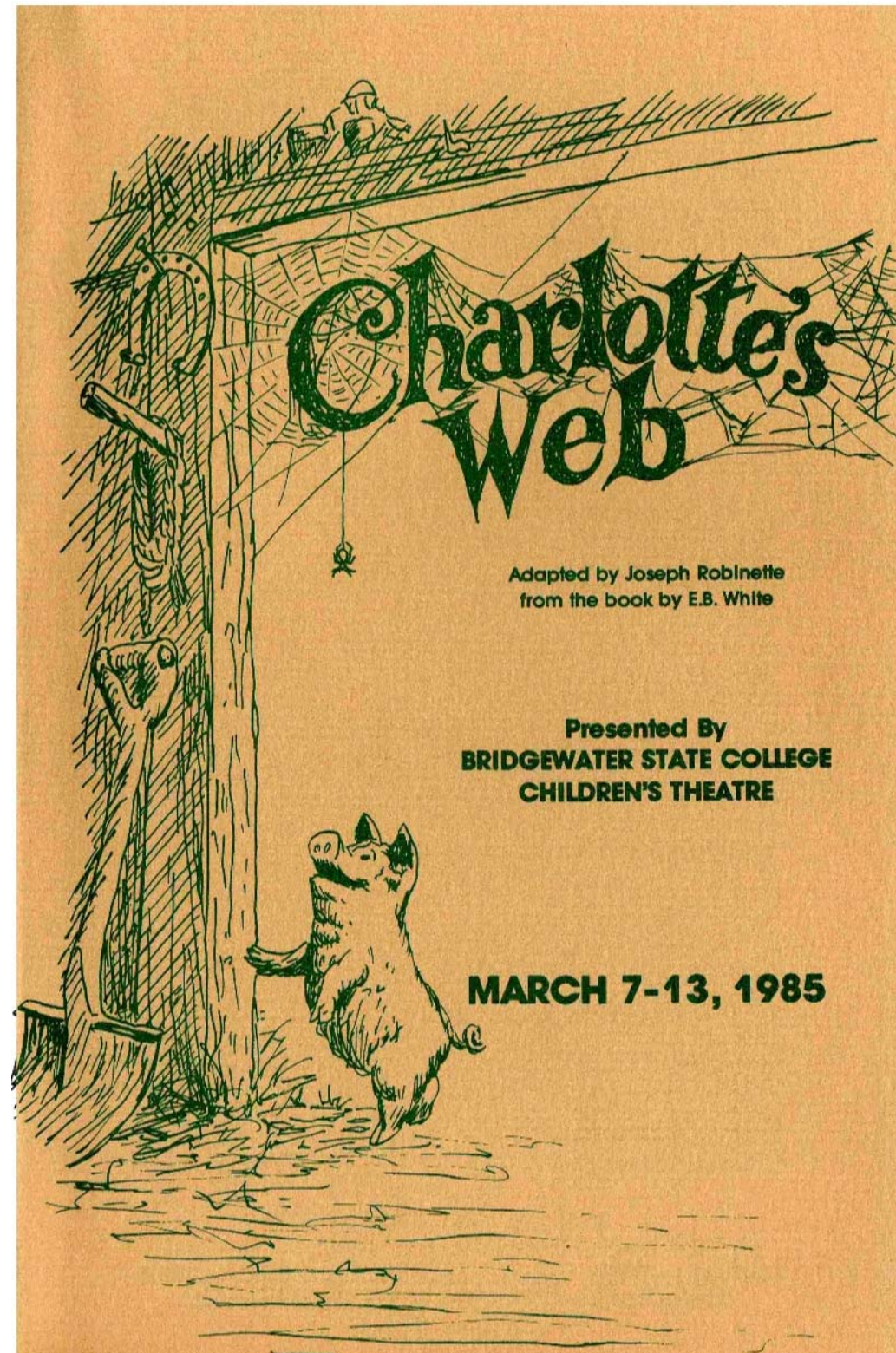
We're gratified for the continued positive response to our sixteen years effort to bring your children quality live dramatic entertainment at reasonable prices. Performing a loved and respected story like *Charlotte's Web*, we believe, is an intriguing challenge to set forth what is really a philosophical problem on a youthful level, and we've directed our energies to that task. During the rehearsal period, there were several unfortunate accidents that left two of the performers with cumbersome leg casts and one important crew member hospitalized. In the best theatrical tradition, however, we think we've surmounted the obstacles and are ready with a show that's the equal of any we've done.

### ACKNOWLEDGEMENTS

The cast and crew of *Charlotte's Web* want to take this opportunity to wish Stephanie Cheney a complete and speedy recovery from the serious accident which occurred while preparing this production.

We are also especially grateful to the following for their assistance with this production:

M Michael Johns  
Donna Fisher-Jackson (B.S.C. Community Services)  
Barbara Condon (B.S.C. Community Services)  
Dr. Glenn Cook (B.S.C. Media Services)  
Allan Ryan (B.S.C. Media Services)  
Chris Harwood (Publicity Photography)  
Clark, the Florist, Middleboro (Helium Balloons)  
Pat Connolly, Photographer (Dodge-Murphy)  
Baggia Press, East Bridgewater



Adapted by Joseph Robinette  
from the book by E.B. White

Presented By  
**BRIDGEWATER STATE COLLEGE  
CHILDREN'S THEATRE**

**MARCH 7-13, 1985**

**Bridgewater State College  
Children's Theatre**

presents

# CHARLOTTE'S WEB

**DIRECTED BY Dr. RICHARD J. WARYE  
DESIGNS BY ARTHUR DIRKS**

## CAST OF CHARACTERS

### THE HUMANS

#### The Arable Family

**JOHN ARABLE** (The Father) ..... Michael O'Connor  
**MARTHA ARABLE** (The Mother) ..... Terri LaPierre  
**AVERY** (Their Son) ..... Mark A. Pimenta  
**FERN** (Their Daughter) ..... Mary Elizabeth Wood

#### The Zuckerman Family

**HOMER ZUCKERMAN** ..... E. Edward Miller  
**EDITH ZUCKERMAN** ..... Barbara A. Scott  
**LURVY** (Zuckerman's Hired Hand) ..... Tony Andrea  
**DR. DORIAN** ..... Thomas P. Poirier  
**REPORTER** ..... Christine Hubert  
**ANNOUNCER** ..... Thomas P. Poirier  
**STORYTELLERS** ..... Peggy McTavish  
Kimberly Swarbrick  
Darlene Violette

### THE ANIMALS

**WILBUR (A Pig)** ..... Helyn Landry  
**CHARLOTTE** (A Spider) ..... Bridget Chin  
**GOOSE** ..... Kimberly Nolan  
**GANDER** ..... Pat J. McCarron  
**SHEEP** ..... Marva D. Cuffee  
**LAMB** ..... Christine Hubert  
**TEMPLETON (A Rat)** ..... Jim Dupuis  
**UNCLE (Another Pig)** ..... Thomas P. Poirier

**TIME:** The Present and the Past

**PLACES:** Arable's Farm, Zuckerman's Barn, The Fairgrounds

CHARLOTTE'S WEB is presented by arrangement with  
THE DRAMATIC PUBLISHING COMPANY  
of Chicago, Illinois.

## PRODUCTION STAFF

TECHNICAL DIRECTOR ..... Arthur L. Dirks  
ASSISTANT TECHNICAL DIRECTOR ..... Michael Norton  
MASK DESIGN AND CONSTRUCTION . . . . . Denise M. Wallace  
ASSISTANT DIRECTOR ..... Christopher Engelsman Torrey  
STAGE MANAGER ..... Kristine M. Glauben  
HOUSE MANAGER ..... Judy Partington  
BOX OFFICE MANAGER ..... Paul Hayden  
COSTUME MISTRESS ..... Dottie Scammon  
ASSISTANT COSTUME MISTRESS ..... Kara Harting  
LIGHTING TECHNICIAN ..... Bethany Barry  
MAKE-UP ARTIST ..... Letitia Riel  
PROGRAMS ..... Christopher E. Torrey, Mark A. Pimenta  
PROPERTY MISTRESS ..... Shari Waite  
PUBLICITY ..... Bethany Barry  
SOUND ENGINEER ..... Christopher Engelsman Torrey

## CREWS

Tony Andrea Liz	Kim Nolan
Armstrong	Jane Norton
Bethany Barry	Judy Partington
Judy Bobrowiecki	Eric Pegnam
Steve Bodecker	Mark Pimenta
Dee Bricklin Kris	Letitia Riel
Glauben Kara	Kathryn Stallard
Harting Paul	Dottie Scammon
Hayden Terri	Chris Torrey
LaPierre Pat	Darlene Violette
McCarron Ed	Shari Waite
Miller Thomas	Denise Wallace
Newell	Mary Wood

**PLEASE: FLASH PHOTOGRAPHY, SMOKING, AND  
REFRESHMENTS ARE NOT PERMITTED IN THE  
THEATRE!**

The Bridgewater State College Children's Theatre is  
a cooperative effort of the Department of Speech  
Communication, Theatre Arts, and Communication  
Disorders and the Ensemble Theatre